


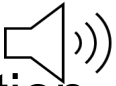


iGeo Multimedia Test (Sample Questions)

Source: <https://www.iac-irtac.org/?q=node/136>

Sample Instruction:

ONLY START WHEN YOU ARE TOLD TO DO SO.

- This test has **40 questions**.
- Look at every page and read the questions carefully.
- You have **50 minutes (educated in English) / 60 minutes (not educated in English) to complete the test**. If you finish early, please wait silently until the time is over.
- Each question is multiple-choice. Choose A, B, C, **or D**. **Only one answer is correct**.
- Mark your choice on the **answer sheet** by making a circle around the letter that you want to select.
 - If you make a mistake, cross out the selected letter and circle a new choice. If you believe there will be any confusion, also write the letter of your answer next to the question number.
- The  symbol represents a video clue; please watch the video to answer the question.
- The  symbol represents an audio clue; please play the audio to answer the question.
- For navigation, please use the arrows on the keyboard to move next (↓ →) or previous (↑ ←) page. **DO NOT CLICK ON THE ESCAPE BUTTON, AS THAT ENDS THE PRESENTATION**

Copyright and Use Notice

- The images, videos, maps, graphics, and all other multimedia materials used in this test are included solely for the purpose of education, assessment, and academic illustration within the context of the International Geography Olympiad (“iGeo”).
- Unless otherwise indicated, iGeo does **not** claim ownership of any third-party copyrighted materials displayed in this test. All rights, including copyright and intellectual property rights, remain with their respective owners.
- These materials are:
 - used on a **non-commercial, educational basis**;
 - provided only to support the understanding and answering of test questions; and
 - **not intended for redistribution, reproduction, public display, publication, or any use outside this assessment.**
- Participants and website visitors may **not** download, copy, reproduce, distribute, modify, publish, or otherwise use any of the multimedia content for purposes beyond viewing it as part of this test, unless prior permission has been obtained from the respective copyright holders.
- If you believe that any material used in this test infringes copyright or other intellectual property rights, please contact the iGeo Organising Committee via [the form](#) so that the material can be reviewed and, if necessary, removed or replaced.

Q 01

In which country were the following photographs taken?

Sources: <https://www.goway.com/destinations/south-pacific/papua-new-guinea/cruise>
<https://www.mappr.co/capital-cities/papua-new-guinea/>
<https://www.wendyperrin.com/destination/insiders-guide-papua-new-guinea/>
<https://www.skyscanner.net/hotels/papua-new-guinea/port-moresby-hotels/lamana-hotel/ht-124322076>
<https://birdsoftheworld.org/bow/species/rbopar1/cur/introduction?media=photos>



A Fiji

B New Caledonia

C Samoa

D Papua New Guinea



Q 02

What natural process is most likely responsible for the landscape transformation observed in the satellite images?

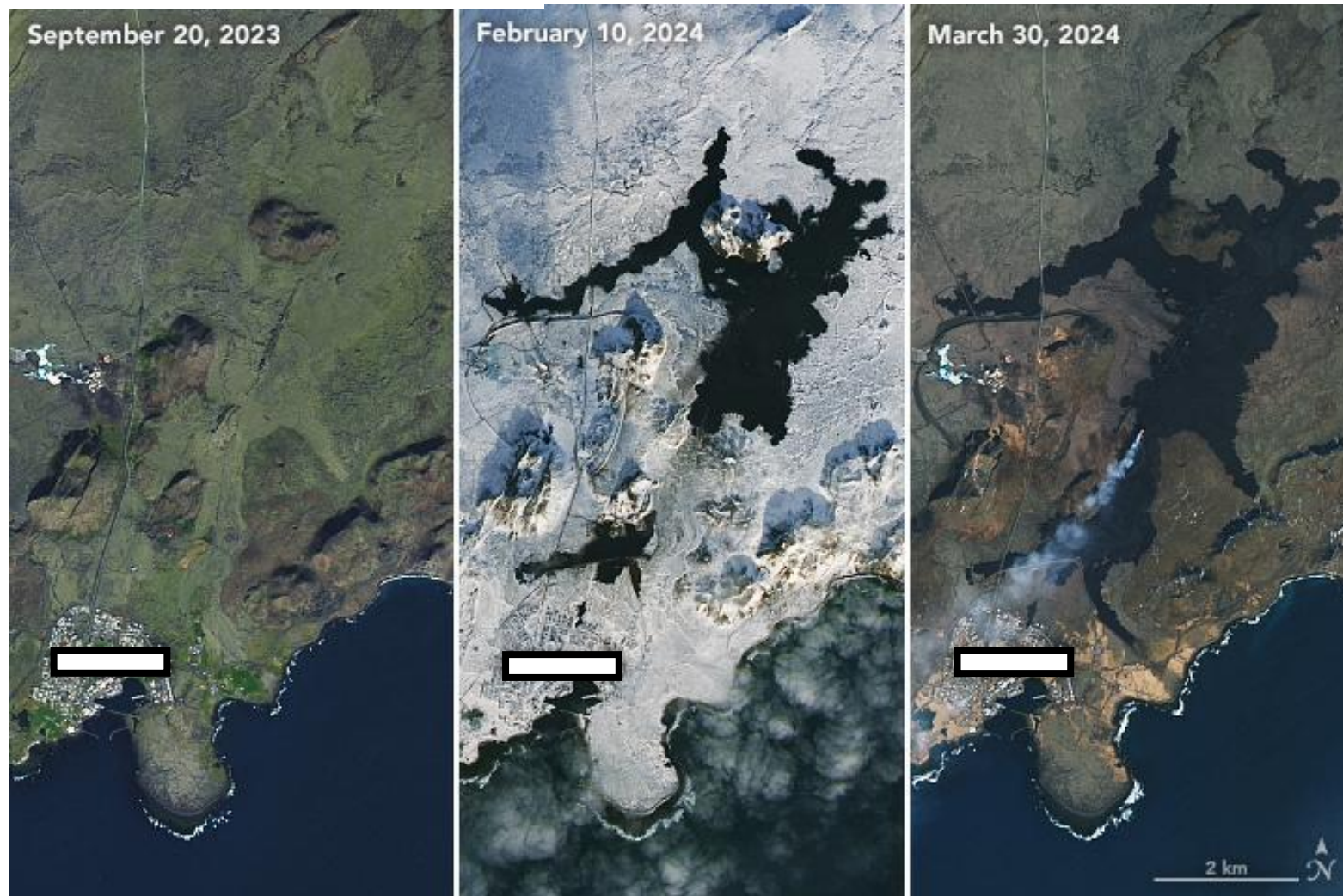
Source: <https://science.nasa.gov/earth/earth-observatory/fresh-flows-spread-across-iceland-152631/>

A **An effusive eruption from a fissure**

B **An oil spill from a ruptured pipeline**

C **The expansion of a wildfire**

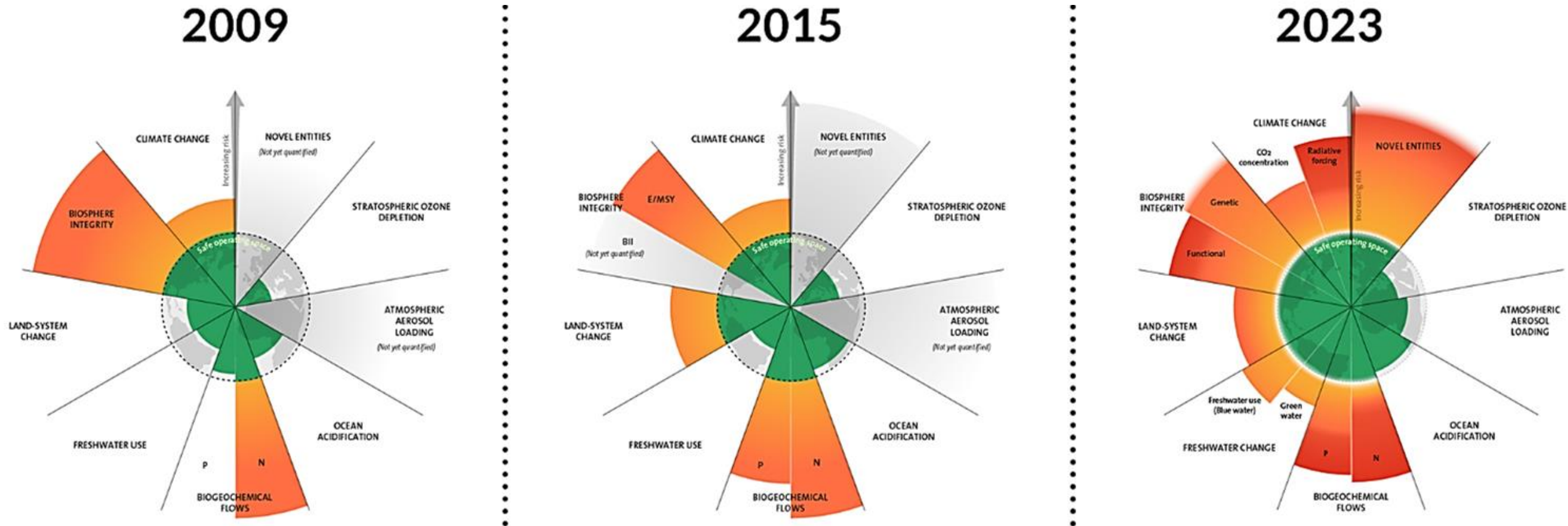
D **The sudden land collapse by melting permafrost**



 *Intensionally blanked*

Q 03 Referring to the planetary boundaries diagrams, which of the following statements best describes the status of the “biosphere integrity” (biodiversity loss) boundary in 2023?

Source: <https://www.stockholmresilience.org/news--events/doing-business-within-planetary-boundaries/chapter-1-a-planet-under-pressure.html>



A It has been exceeded, suggesting unsustainable rates of species extinction.

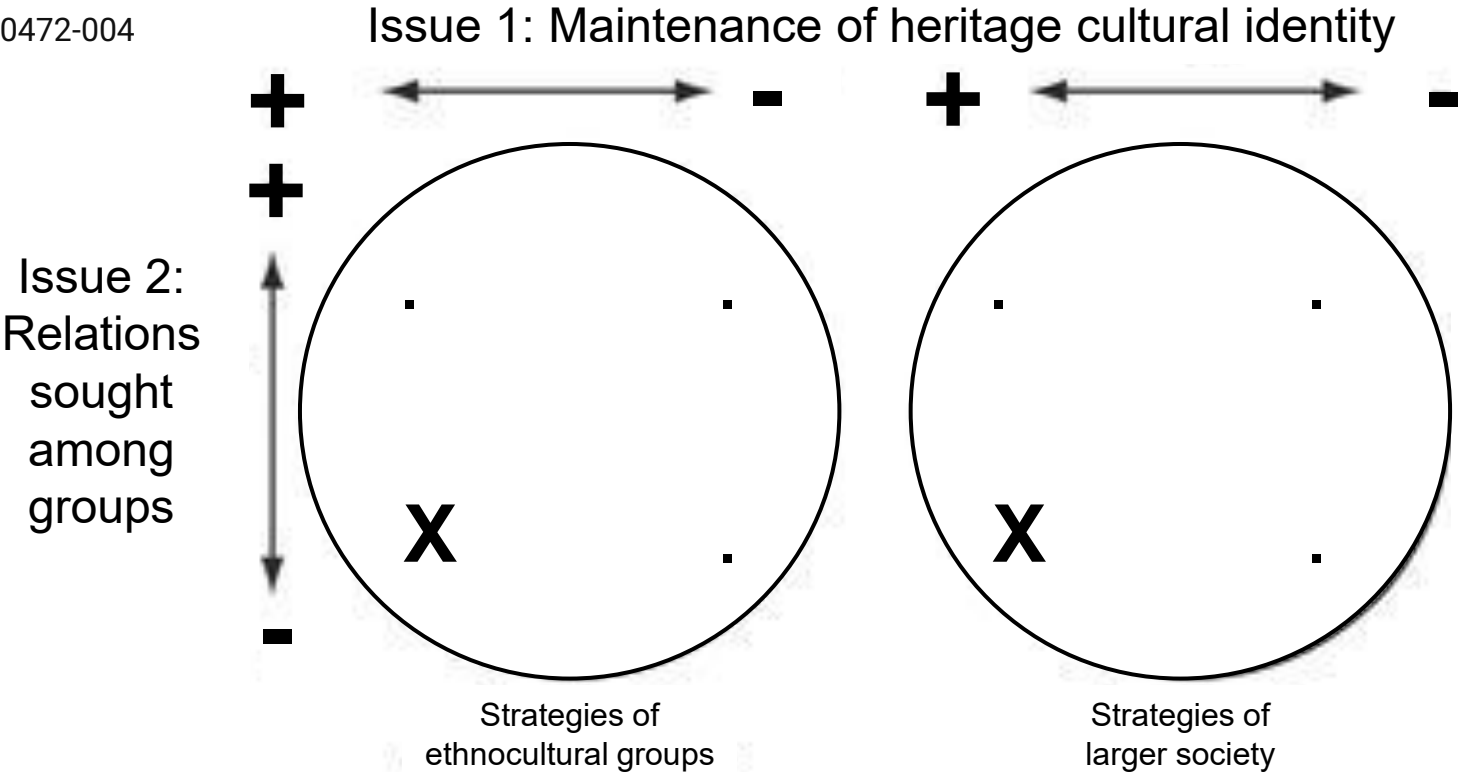
B It is approaching the boundary but remains within the safe zone.

C It is currently within the safe operating space, with minimal risk.

D It is not yet defined within the planetary boundaries framework.

Q 04 Which approaches are most likely for place X as shown in the diagram?

Source: <https://doi.org/10.1037/10472-004>



- A** Assimilation and Melting pot
- B** Integration and Multiculturalism
- C** Marginalisation and Exclusion
- D** Separation and Segregation

Q 05

What does the following graph represent?

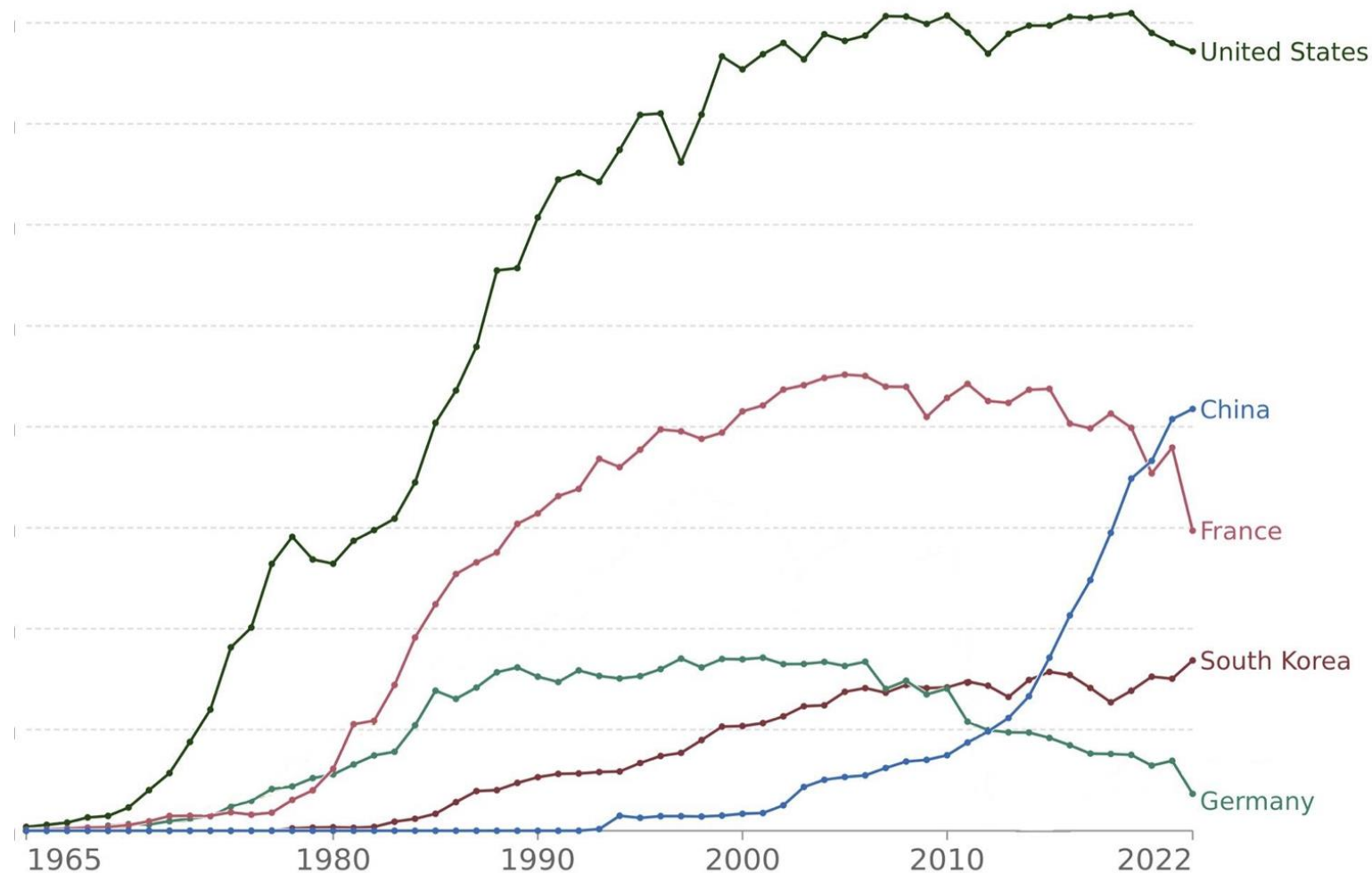
Source: https://commons.wikimedia.org/wiki/File:Nuclear_power_generation_in_different_countries.svg

A Gross domestic product

B Immigrant population

C Nuclear power generation

D Vehicle production



Q 06

Based on the schematic, which environmental concern would most likely be associated with the desalination process shown?

Source: <https://www.istockphoto.com/vector/desalination-plant-desalt-saline-water-gm690645396-127312293>

A

The reduction of underground freshwater recharge due to changes in land use

B

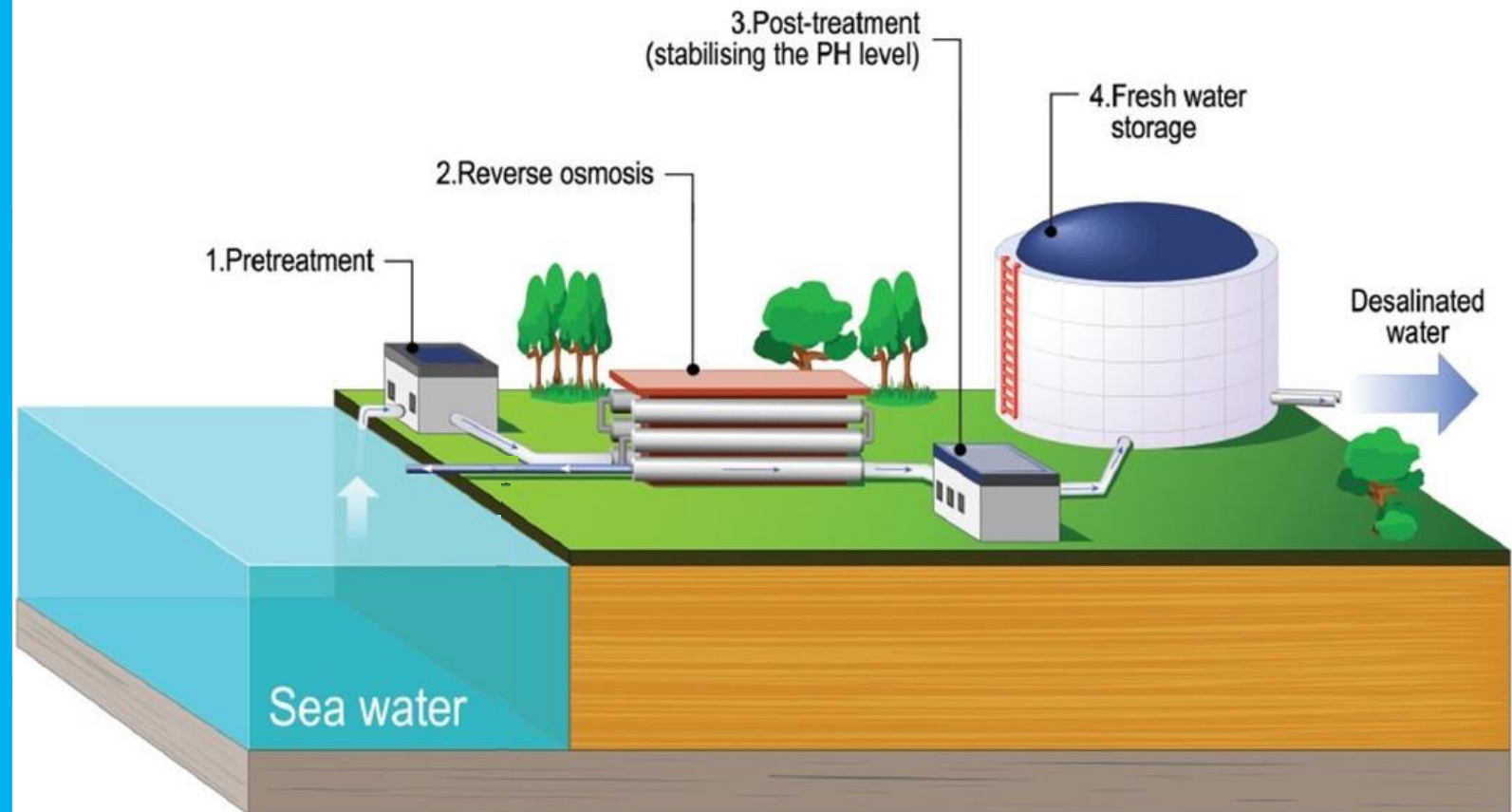
The release of concentrated brine into the sea, potentially harming marine life

C

The competition between vegetation and infrastructure for freshwater allocation

D

The increased likelihood of localised flooding from surface water mismanagement



Q 07

What might be a long-term consequence if the Gulf of Maine continues warming at the current rate?

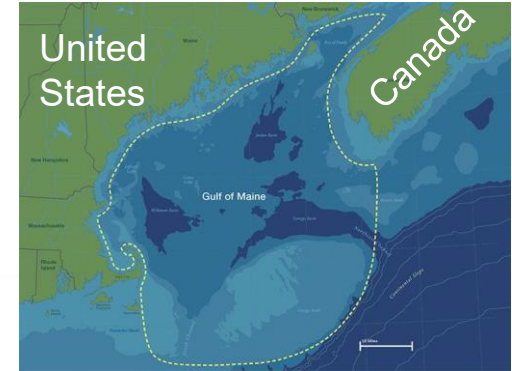
A Ocean temperatures worldwide will increase at a similar pace

B Regional climate patterns in the Gulf will become more predictable

C Marine species could migrate to cooler ocean regions

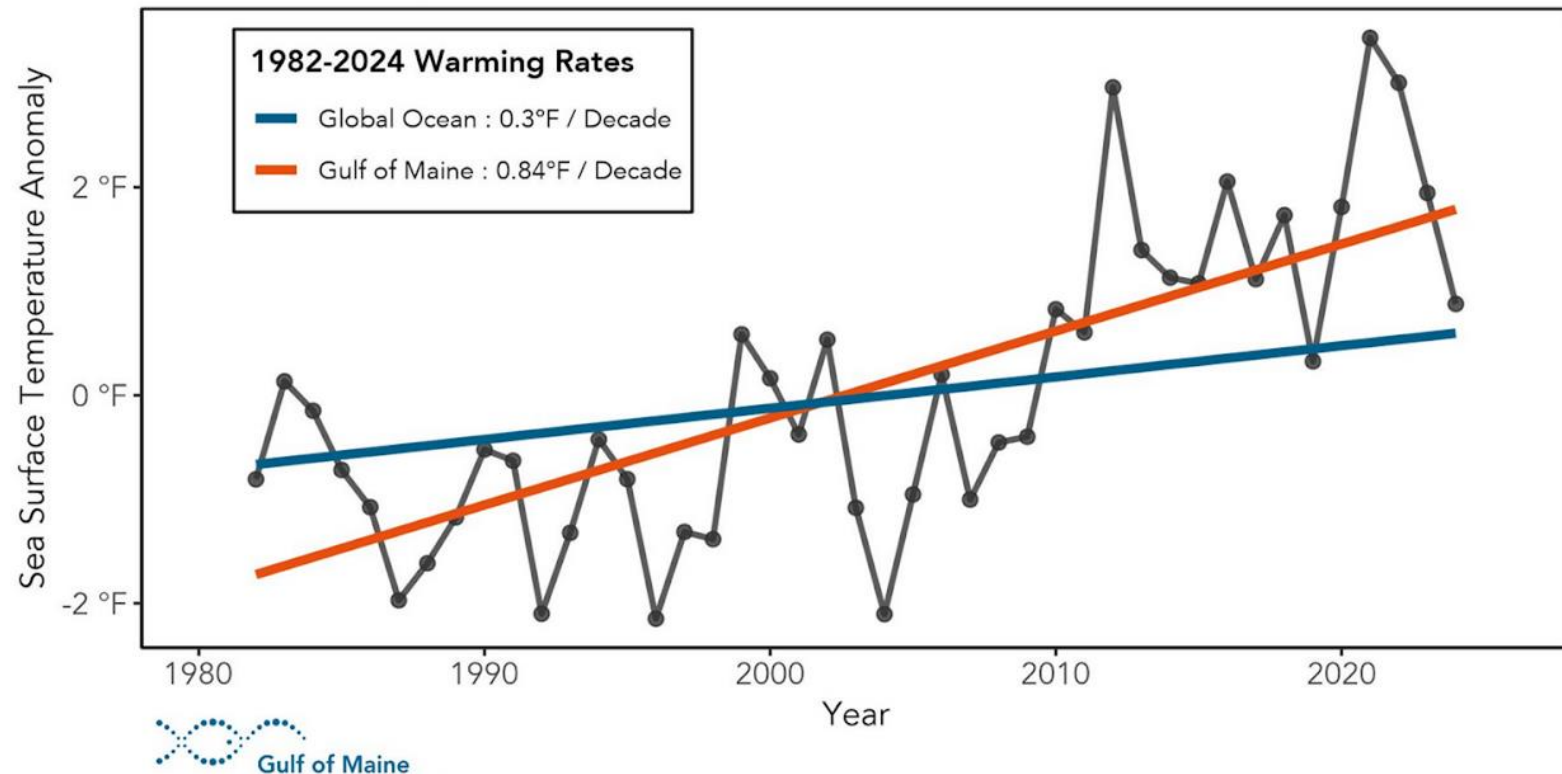
D The rising temperature trend will stop without human intervention

Sources:
<https://www.neaq.org/exhibit/gulf-of-maine/>
<https://gmri.org/stories/2024-gulf-of-maine-warming-update/>



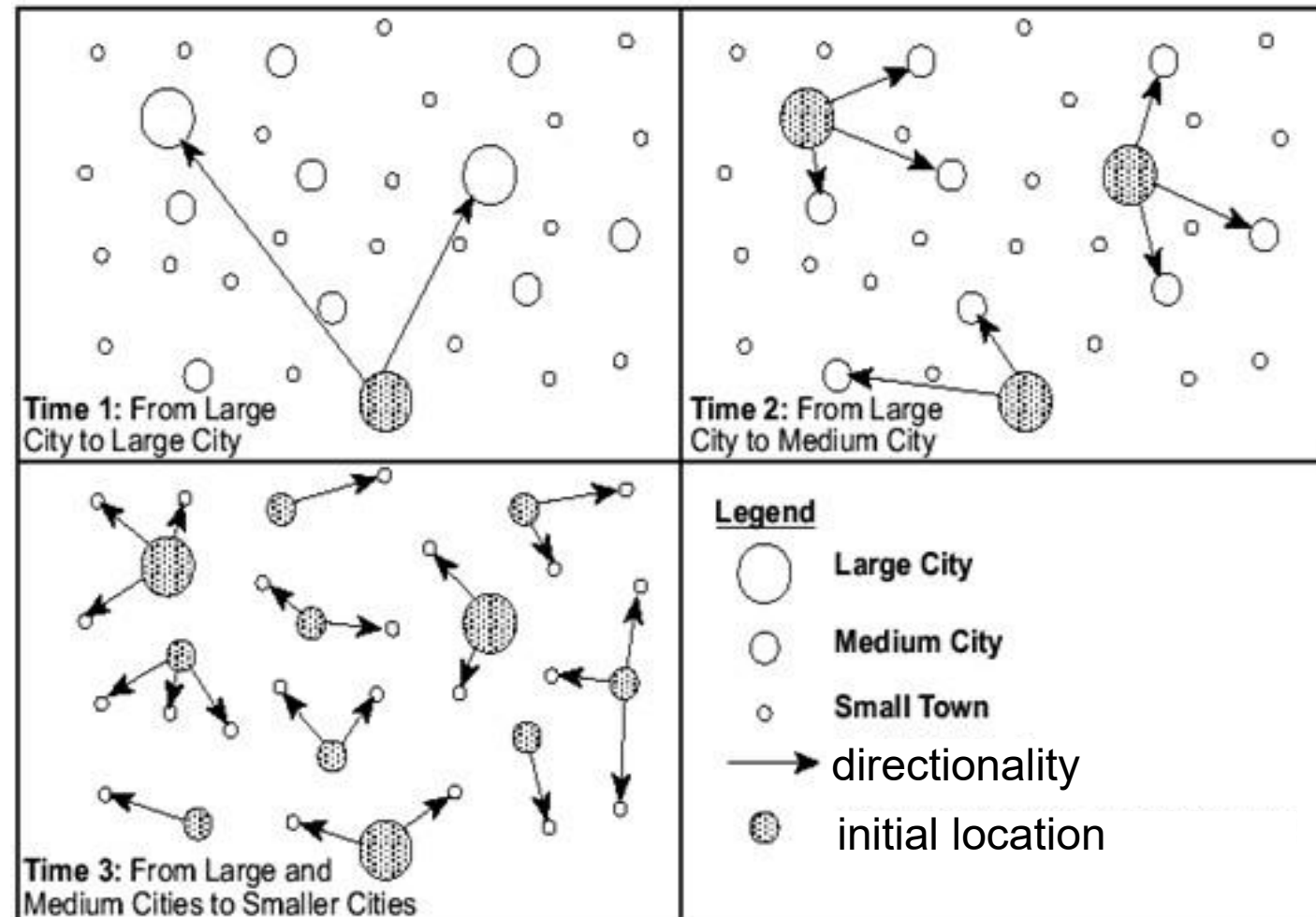
Gulf of Maine:

Annual Sea Surface Temperature Anomalies



Q 08 What pattern does this diagram represent?

Source:
<https://thebritishgeographer.weebly.com/the-spread-of-disease-and-its-management.html>



A Cultural Diffusion

B Flow of Labour

C Spread of Diseases

D Urbanisation

Q 09

In which of the following scenarios would this urban model be most effectively used to explain urban spatial patterns?

Source: <https://taylorgeoitalyisawesome.wordpress.com/2015/05/10/urban-model-multiple-nuclei/>

A

Analysing residential zones in Global North cities with decentralised business hubs

B

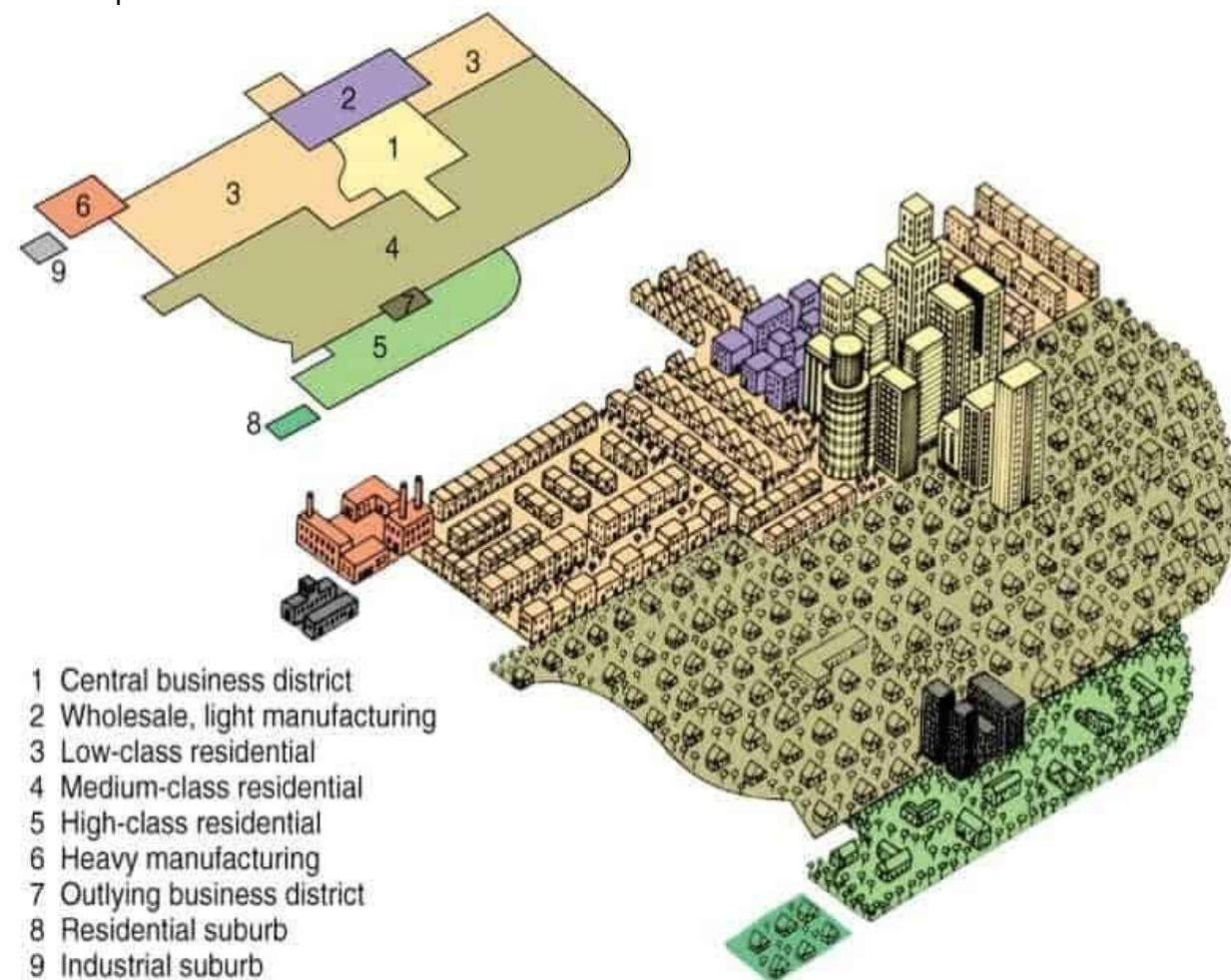
Describing factory-based city growth in the early 20th-century industrial era

C

Examining informal settlements in peri-urban megacity zones

D

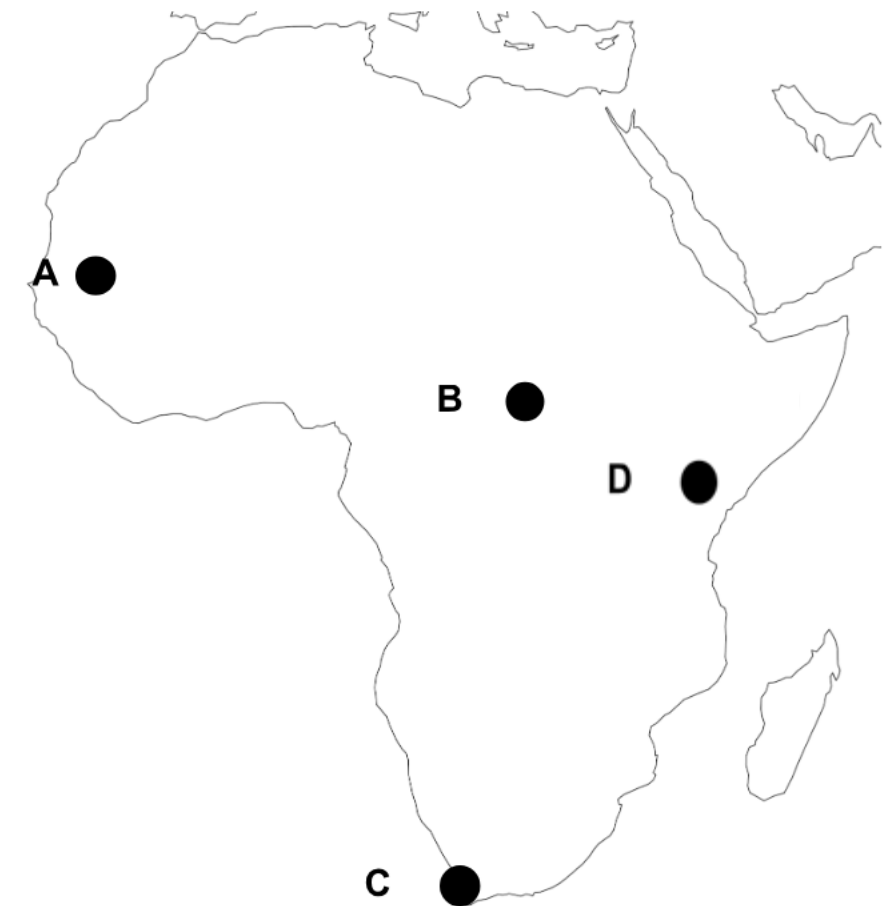
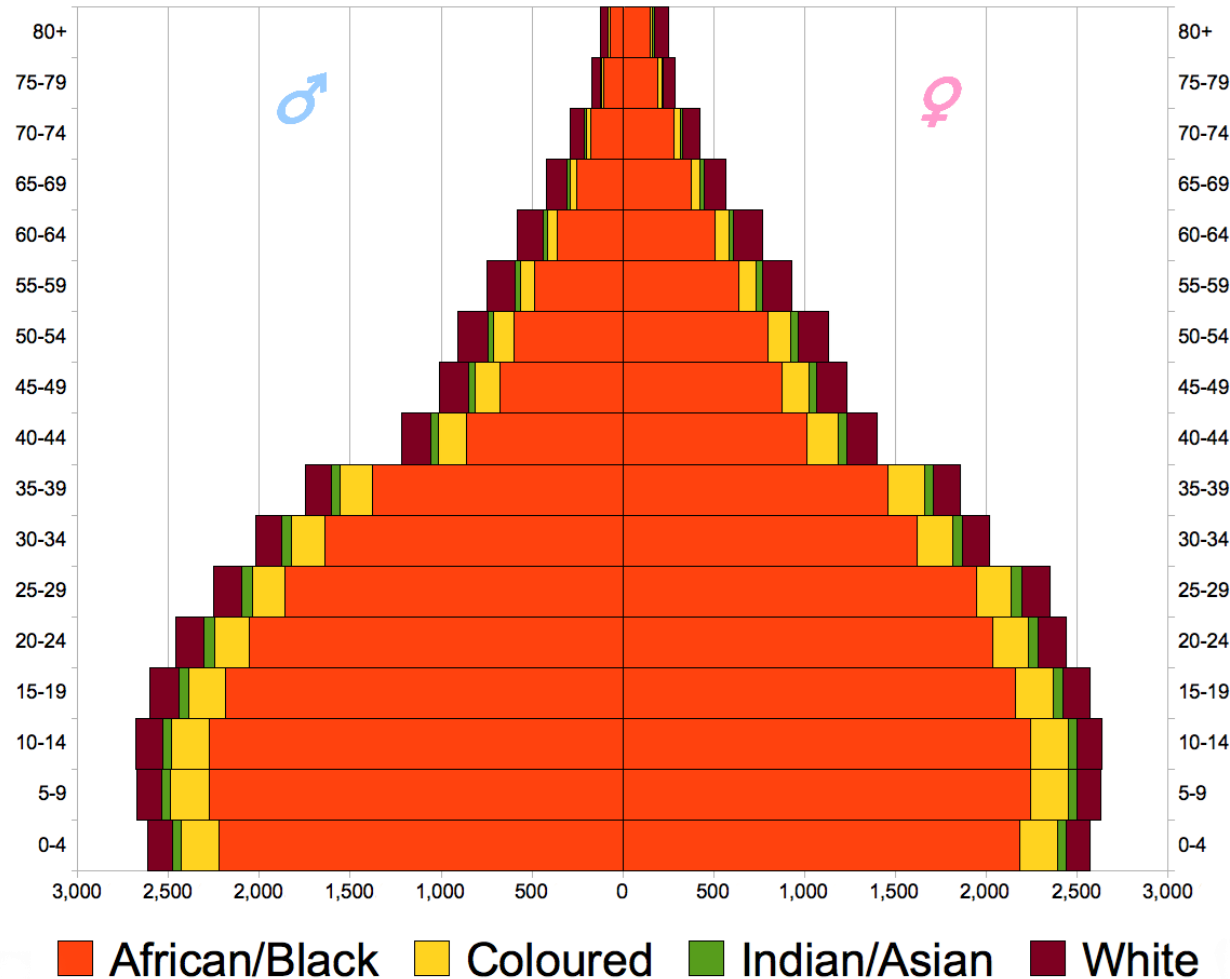
Interpreting migration-driven city structures in the Global South since 2010



Q 10

Which point on the map is most likely to be represented by the national population pyramid shown?

Sources: https://commons.wikimedia.org/wiki/File:South_Africa_Population_Pyramid_2011_estimates.png
<https://www.istockphoto.com/vector/world-map-illustration-gm1311340325-400470881>



Q 11

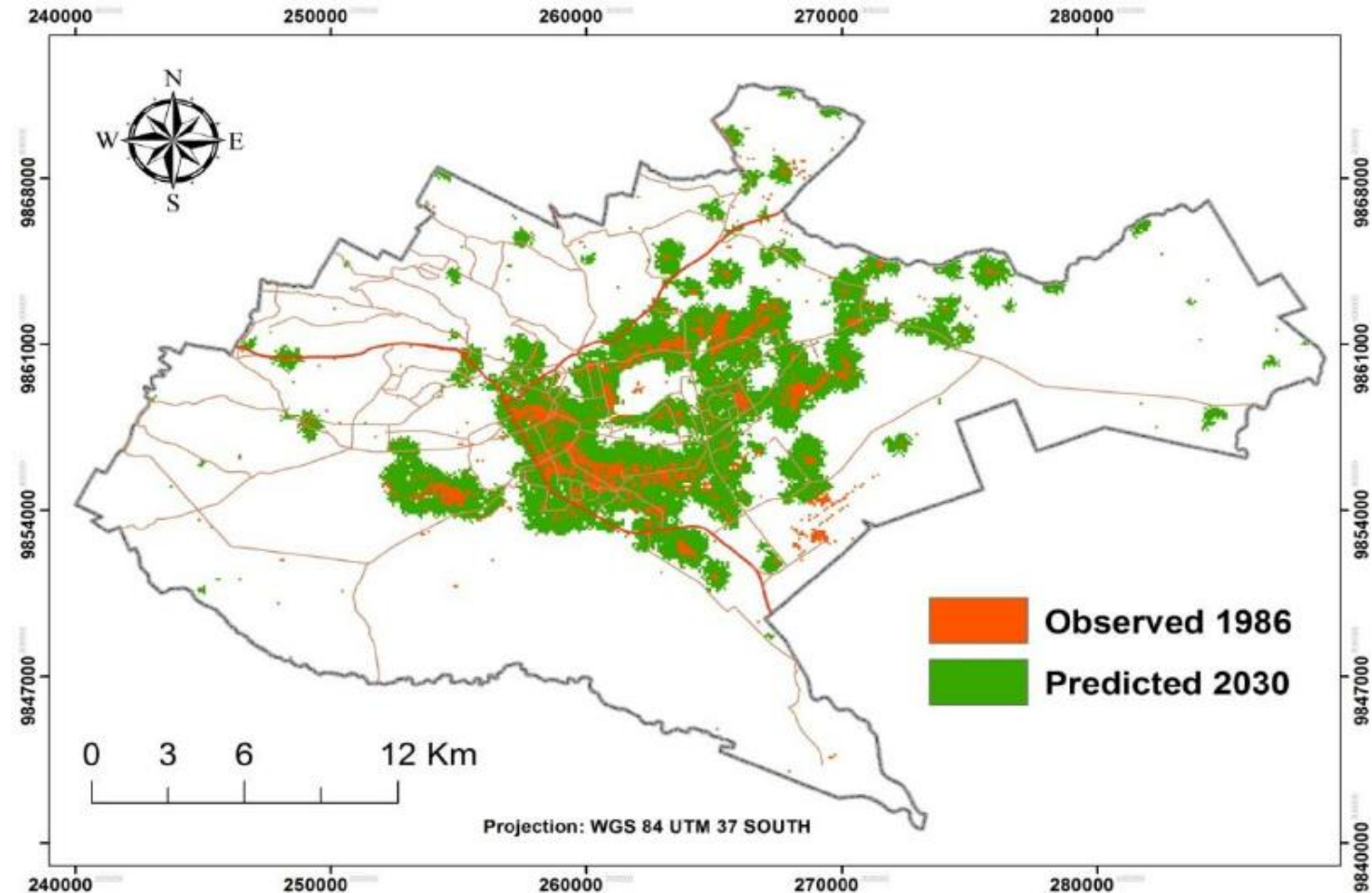
This map represents observed and predicted growth in Nairobi between 1986 and 2023. What urban challenge best explains the widespread and fragmented growth pattern?

A The expansion of high-rise residential developments

B The growth of informal and unplanned settlements

The improved public healthcare and service delivery

The increase in affordable housing supply by the government



Source: https://www.researchgate.net/figure/Urban-growth-simulation-in-Nairobi-in-scenario-two-2030_fig9_260420063

Q 12

How does the rail network shown on the map contribute to Argentina's economic geography?

Source: <https://www.liberallandscape.org/2019/04/15/pedestrian-priority-in-buenos-aires/>

A

It facilitates export of agricultural products from inland regions

B

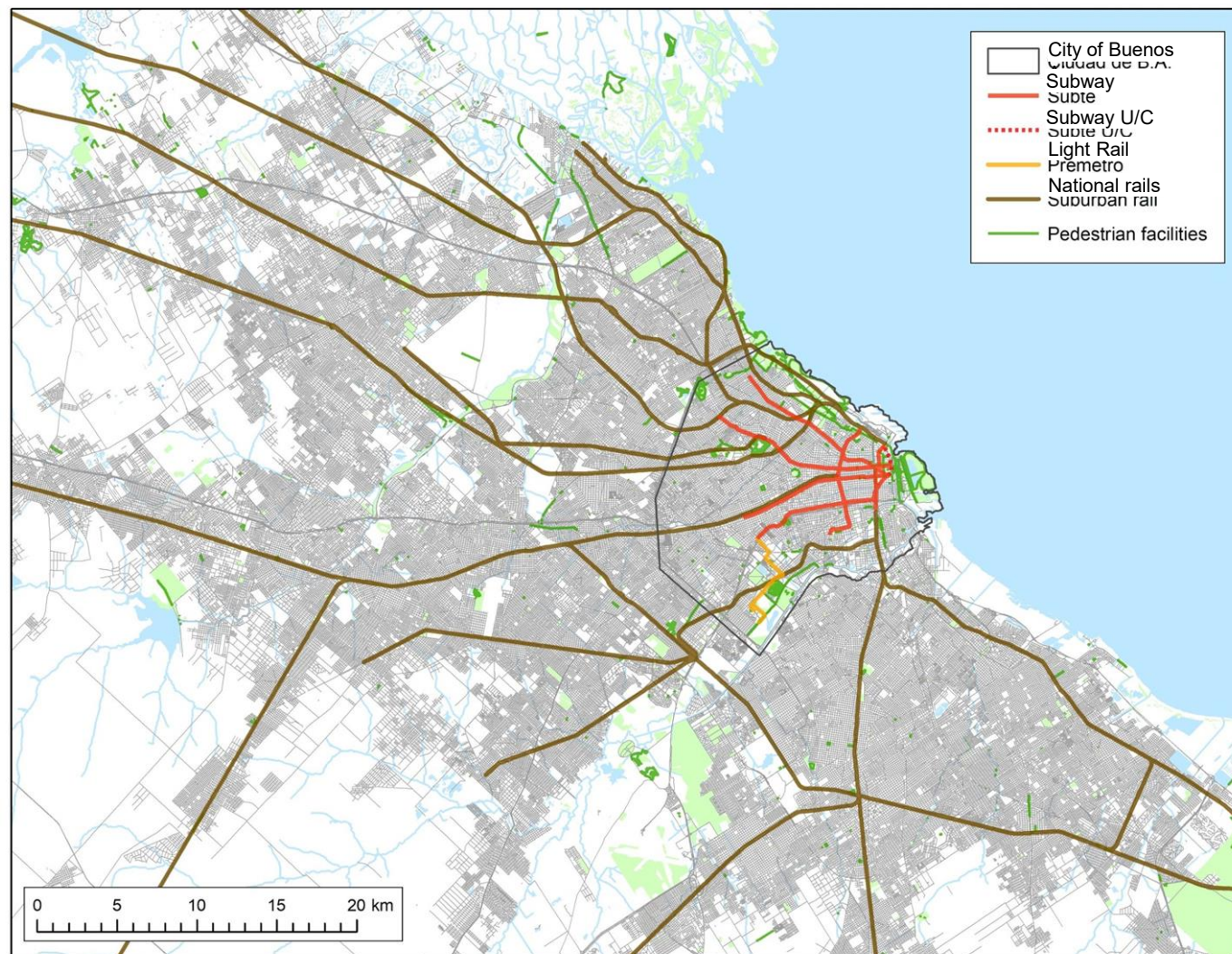
It improves access between rural communities and cities

C

It links large car production sites directly to overseas markets

D

It reduces trade dependence on Argentina's landlocked neighbours.



Q 13

Which geographic characteristic best explains the distribution of the world's major wheat-producing areas as shown on the map?

Source: https://link.springer.com/chapter/10.1007/978-3-030-90673-3_4

A

Broad flatlands that support large-scale farming

B

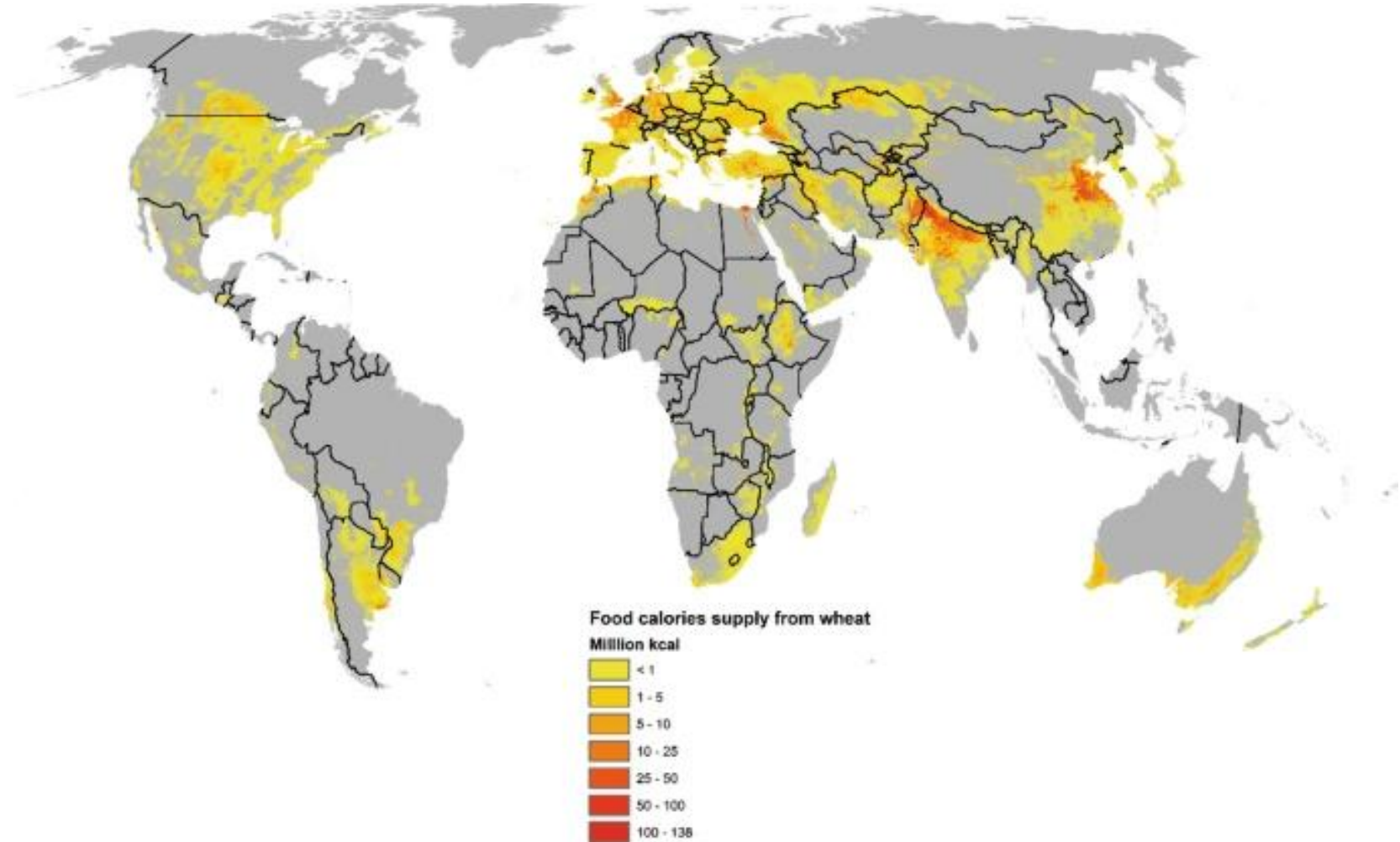
Close distance to international trade ports

C

High population densities and urban centres

D

Mountainous terrain that conserves soil nutrients



Q 14

What urban issue is clearly illustrated by the spatial contrast shown in the aerial image?

Source:
<https://www.scmp.com/magazines/style/news-trends/article/2160208/drone-images-india-south-africa-offer-birds-eye-view>



Clear enforcement of urban green belt zoning policies

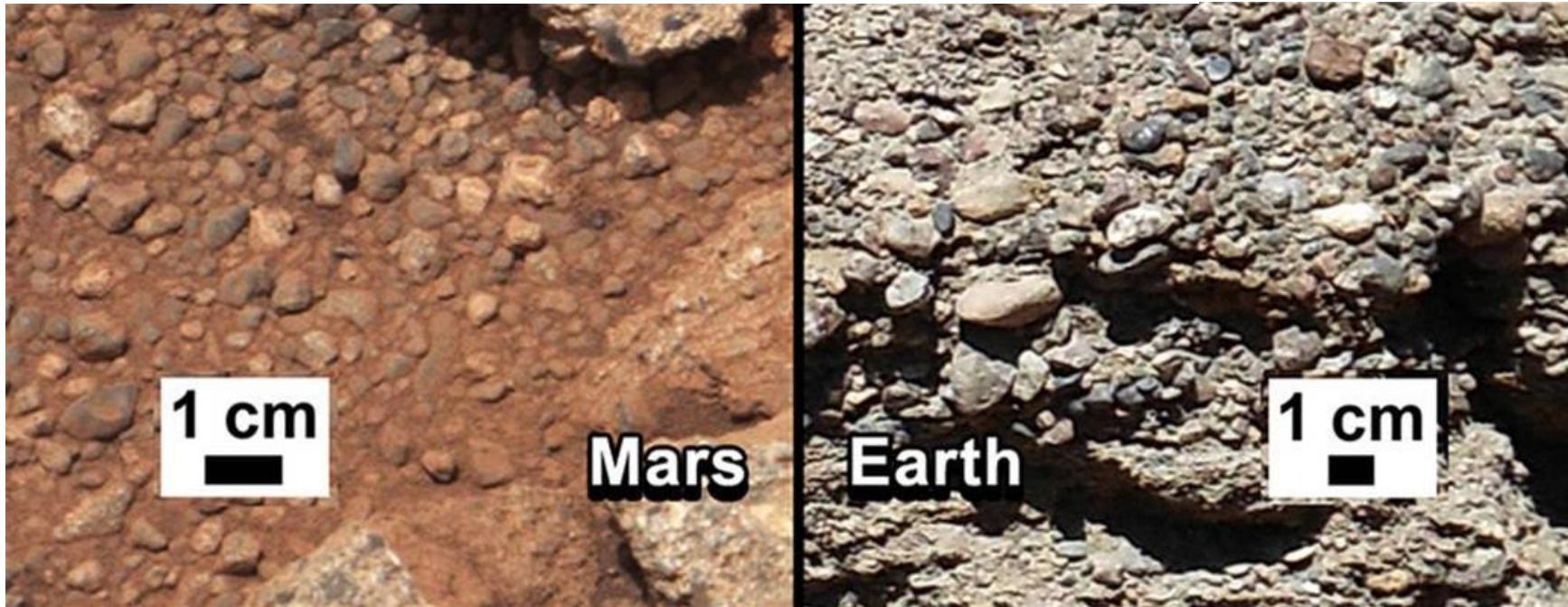
Effective launch of smart city development strategies

Deepening economic inequality and spatial segregation

Slowing rates of rural-to-urban migration

Q 15 Which statement is true about these images from Mars and Earth?

Source: <https://science.nasa.gov/resource/rock-outcrops-on-mars-and-earth/>



- A** Both images show breccia rocks, indicating earthquake activity.
- B** Both images show conglomerate rocks, indicating an abundance of liquid.
- C** Both images show granite rocks, indicating volcanic activity.
- D** Both images show slate rocks, indicating contact metamorphism.

Q 16

The following diagram shows the global distribution of a landform. What is the specific type of landform?

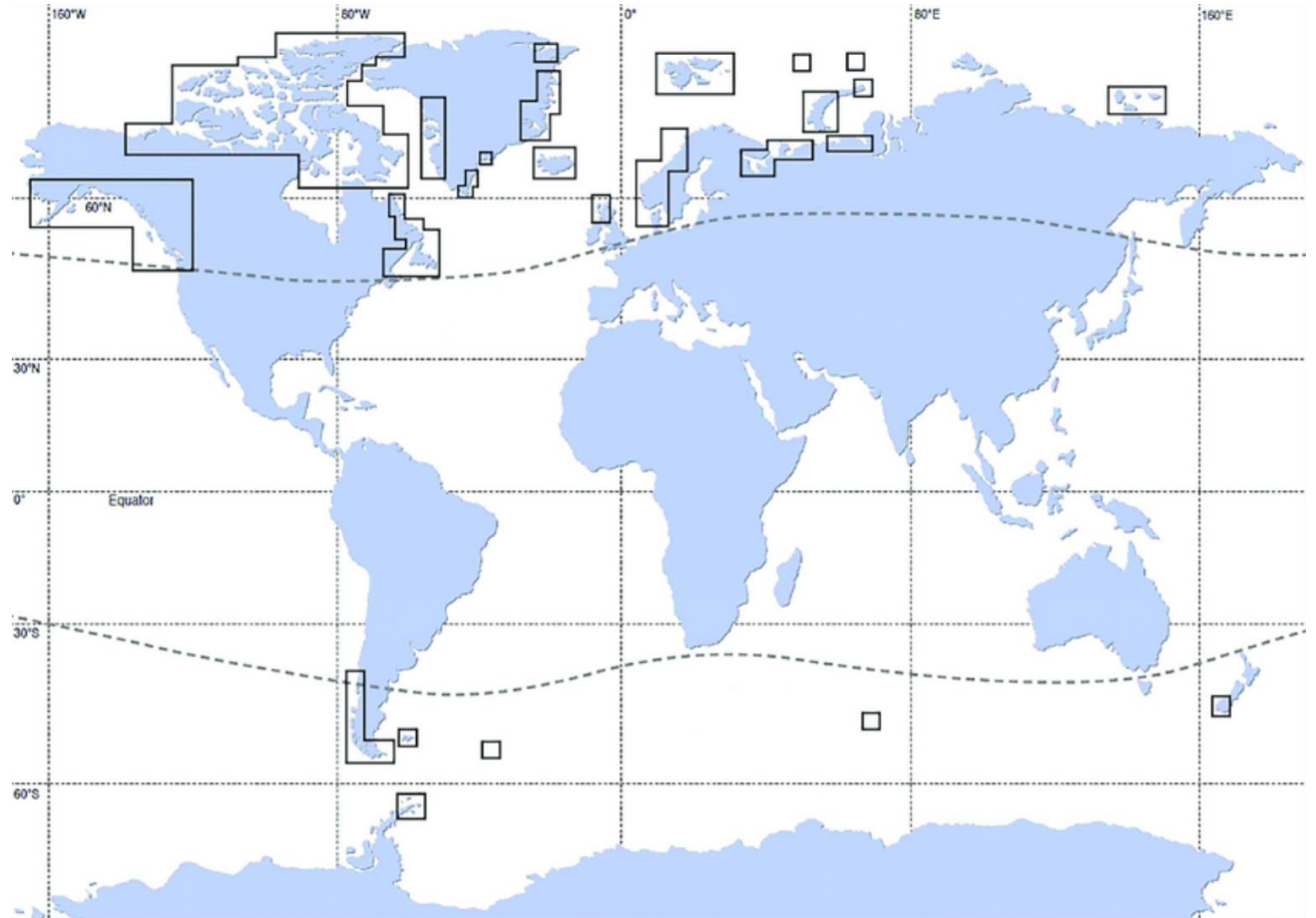
Source: https://www.researchgate.net/figure/Global-distribution-of-fjords_fig1_339626378

A Drumlins

B Fjords

C Nunataks

D Yardangs



Q 17

What environmental factor likely influenced the site selection for this solar project?

Source: http://en.sasac.gov.cn/2019/01/31/c_813.htm

A Arid climate allows consistent energy output

B Mountainous site for wind energy potential

C Remote site to avoid town conflicts

D Rocky ground supports large structures



Q 18

Which of the following spaces best fulfils Oldenburg's definition of a "Third place"?

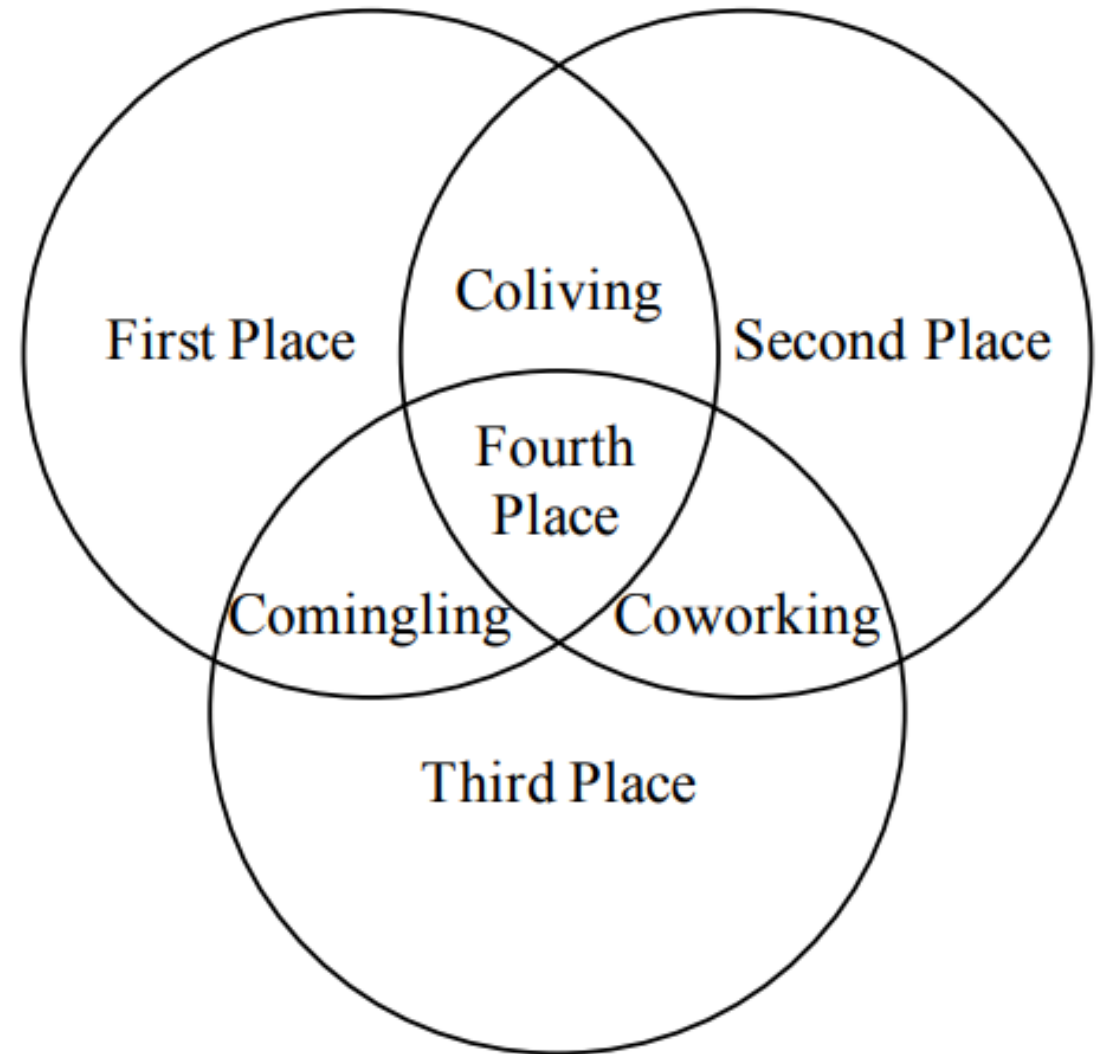
Source: https://papers.ssrn.com/sol3/papers.cfm?abstract_id=3056754&ref=dsebastien.net

A A shared workspace that requires registration to access

B A community café where people from different walks of life gather spontaneously

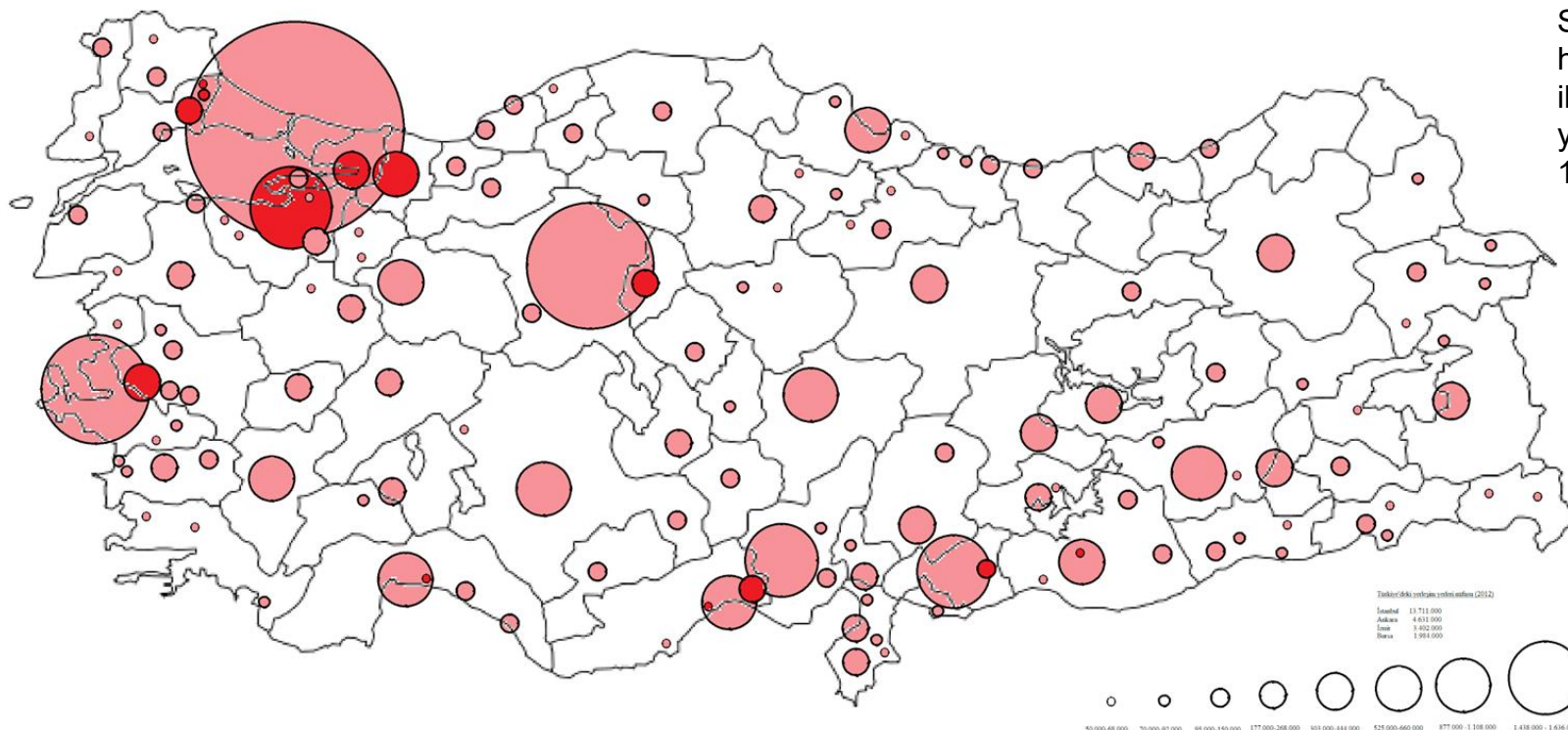
C A residential garden courtyard shared by tenants, especially families

D A university study zone designed for focused, individual work and quietude.



Q 19

The map shows an urban system where one city dominates in size relative to others. Based on this spatial pattern, if current growth trends continue, which economic effect is most likely to occur?



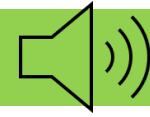
A Amplification of regional inequality due to uneven capital and labour flows

C Increased innovation in smaller cities as they compete for investment

B Greater integration of outlying cities into a balanced urban network

D Stabilisation of growth in the dominant city due to decentralisation pressures

Q 20 What geographic topic is referred to in this song?



Source: <https://www.youtube.com/watch?v=4xwGO2Qkwww>

A Erosion

B Mass movement

C Plate tectonics

D Volcanic activity



Q 21

Which geographical concept best explains the human response to destruction in the image?

Source:
<https://www.straitstimes.com/world/middle-east/children-play-in-rubble-of-gaza-for-eid-holiday>



A Adaptive use of transitional environments

B Community resilience to disrupted spaces

C Irregular housing patterns in cities

D Negative labelling of conflict zones

Q 22

What is the barometric pressure at Reykjavik, Iceland?

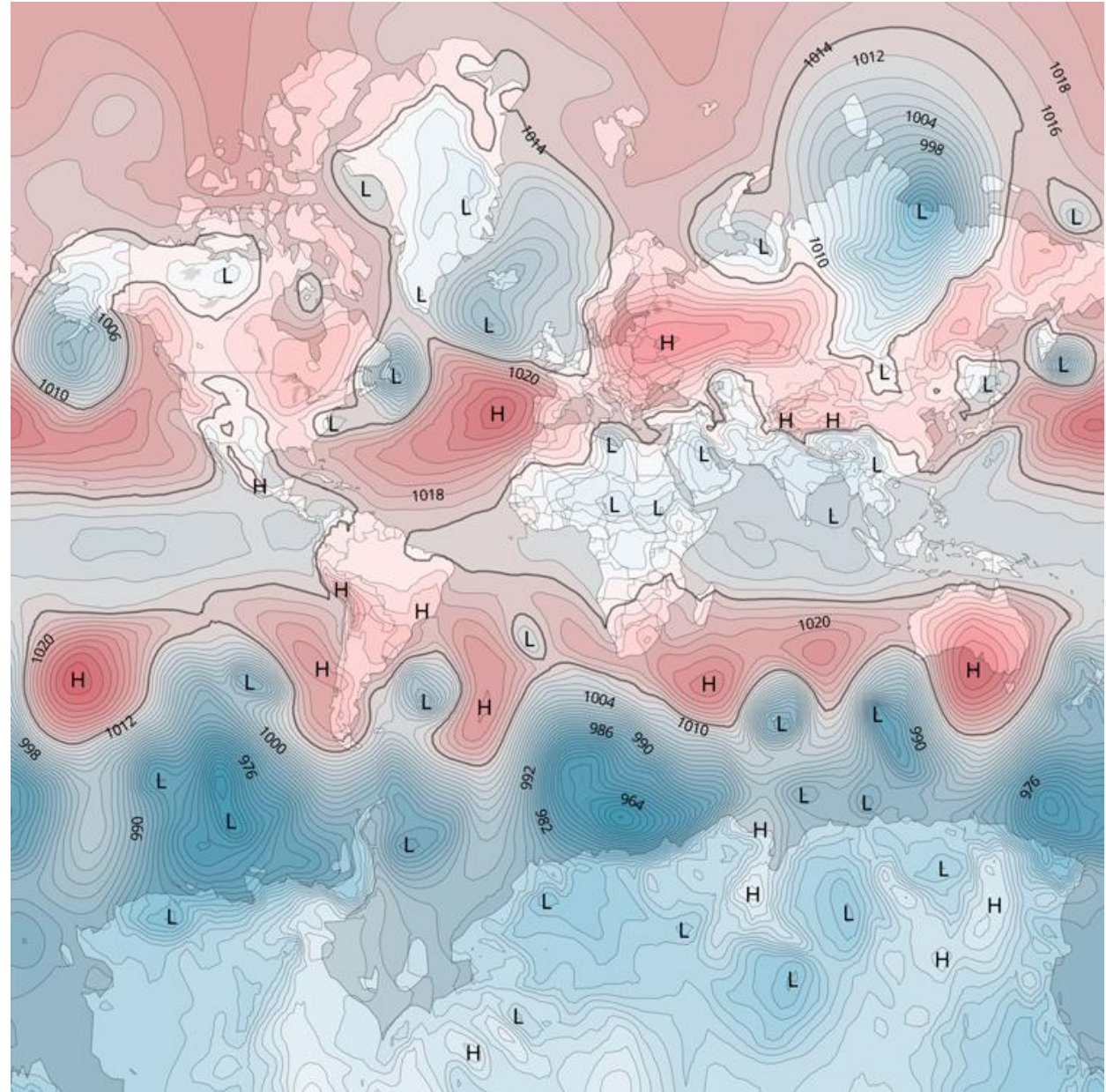
Source: <https://www.surfertoday.com/surfing/how-to-read-a-weather-map>

A 1000mb

B 1007mb

C 1021mb

D 1028mb



Q 23

Which statement about the weather and geographical features in this landscape is most likely correct?

Source: <https://artofmuseums.com/products/mmoa0007cole>



- A** Advance of a cold front over a downstream part of a river.
- B** Advance of a cold front over an upstream part of a river.
- C** Advance of a warm front over a downstream part of a river.
- D** Advance of a warm front over an upstream part of a river.

Q 24

Which of the options provided explains the cross-cultural process represented by BLACKPINK's incorporation of a 19th-century Western classical violin theme into a 21st-century K-pop track?



Blackpink Shut Down

Sources: <https://www.youtube.com/watch?v=POe9SOEKotk>
<https://www.whosampled.com/Niccol%C3%B2-Paganini/III.-Rondo-%C3%A0-La-Clochette/>



Niccolò Paganini "III. Rondo à La Clochette"

A Cultural appropriation

B Cultural ascendancy

C Cultural hegemony

D Cultural hybridisation

Q 25

This NASA satellite image, described as showing “rivers of gold,” is linked to human activity in a tropical region. What is the most likely environmental impact associated with this activity?

Source:

<https://eol.jsc.nasa.gov/Search/Photos/photo.pl?mission=ISS064&roll=E&frame=16203>



A

Accelerated desertification due to wind erosion.

B

Contamination of waterways due to mercury usage in mining.

C

Increased glacial melting due to greater solar radiation absorption.

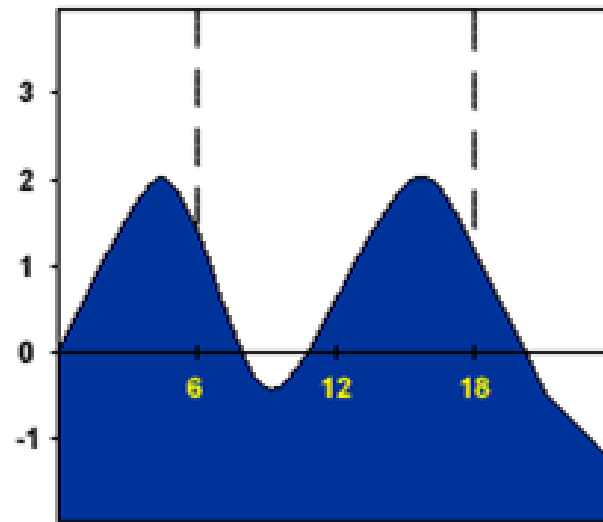
D

Increase of mangrove area due to extra natural fertilization.

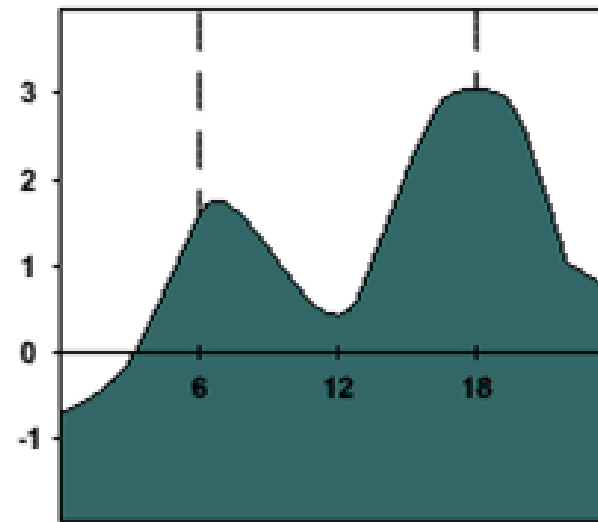
Q 26

The graphs illustrate changes in water levels at three sites over a 24-hour period. What do these graphs portray?

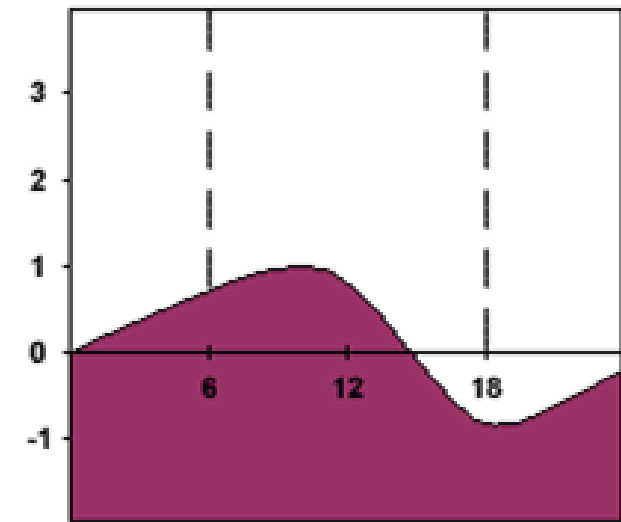
Source: https://www.algebra-lab.org/practice/practice.aspx?file=Reading_Tides.xml



Time (hrs) →



Time (hrs) →



Time (hrs) →

A Daily flood peaks during the monsoon season

B Fluctuations in water surface levels due to thermal expansion

C Variations in sea surface temperature across regions

D Tidal height patterns across different coastal areas

Q 27

What does the following map represent?

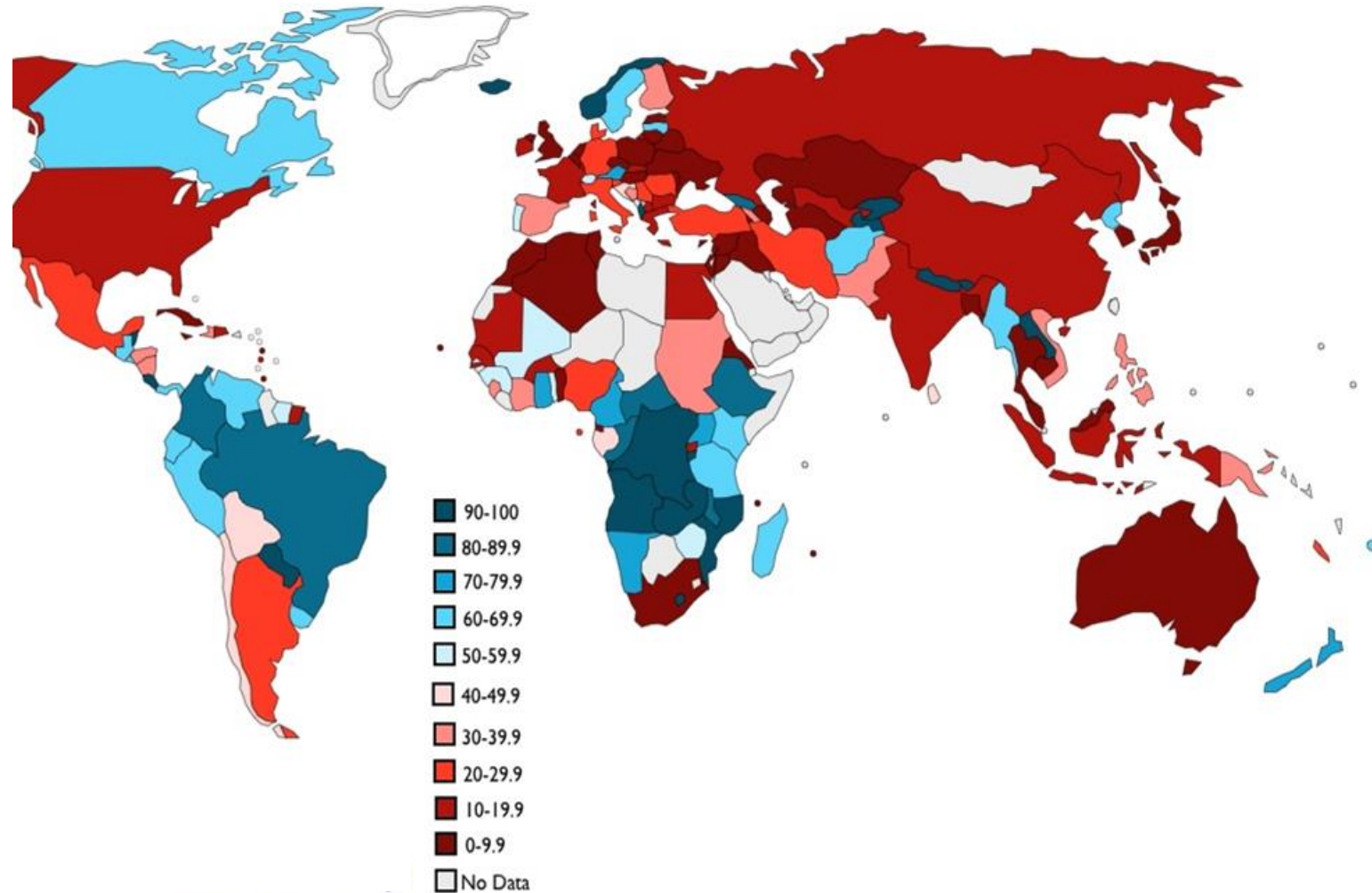
Source: <https://www.geocurrents.info/blog/2012/07/04/mapping-renewable-electricity-generation/>

A % of electricity generation from renewable sources

B % of people speaking local dialects

C % of households with internet access

D % of population living in urban areas



Q 28

Based on the image, which option describes the time of day and season for New Zealand?

Source: <https://science.nasa.gov/earth/earth-observatory/how-on-earth-was-this-image-made/>

A Summer afternoon

B Summer morning

C Winter afternoon

D Winter morning



Q 29

Based on the geological features and labelled structures on the map, which of the following volcano classifications best describes Santorini?

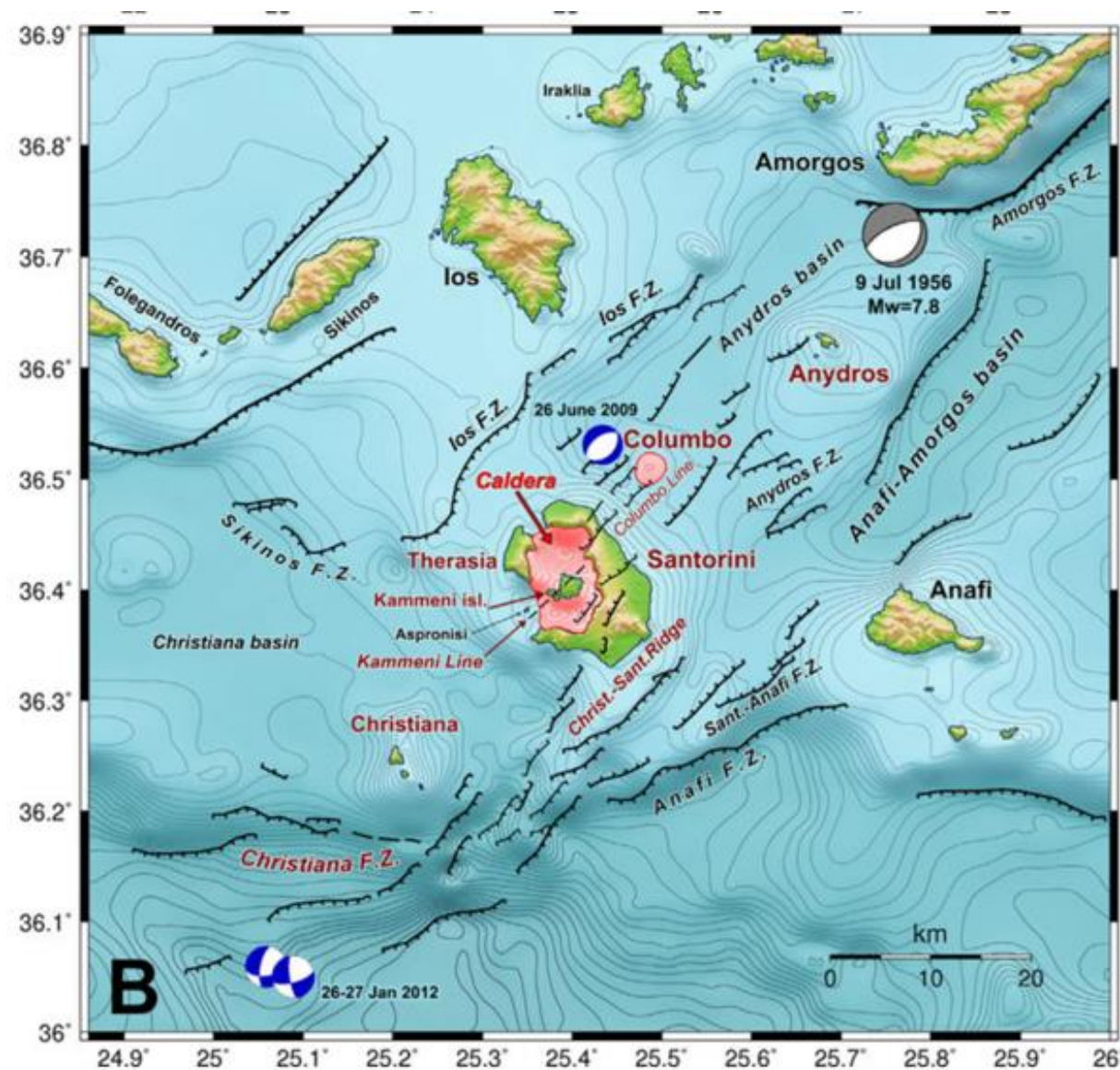
Source: https://www.researchgate.net/figure/A-Seismotectonic-map-for-the-region-of-Southern-Aegean-B-Active-faults-of-the_fig1_270293778

A Cinder Cone

B Lava Plateau

C Shield Volcano

D Stratovolcano



Q 30

What do the images suggest about the impact of global efforts to address ozone depletion?

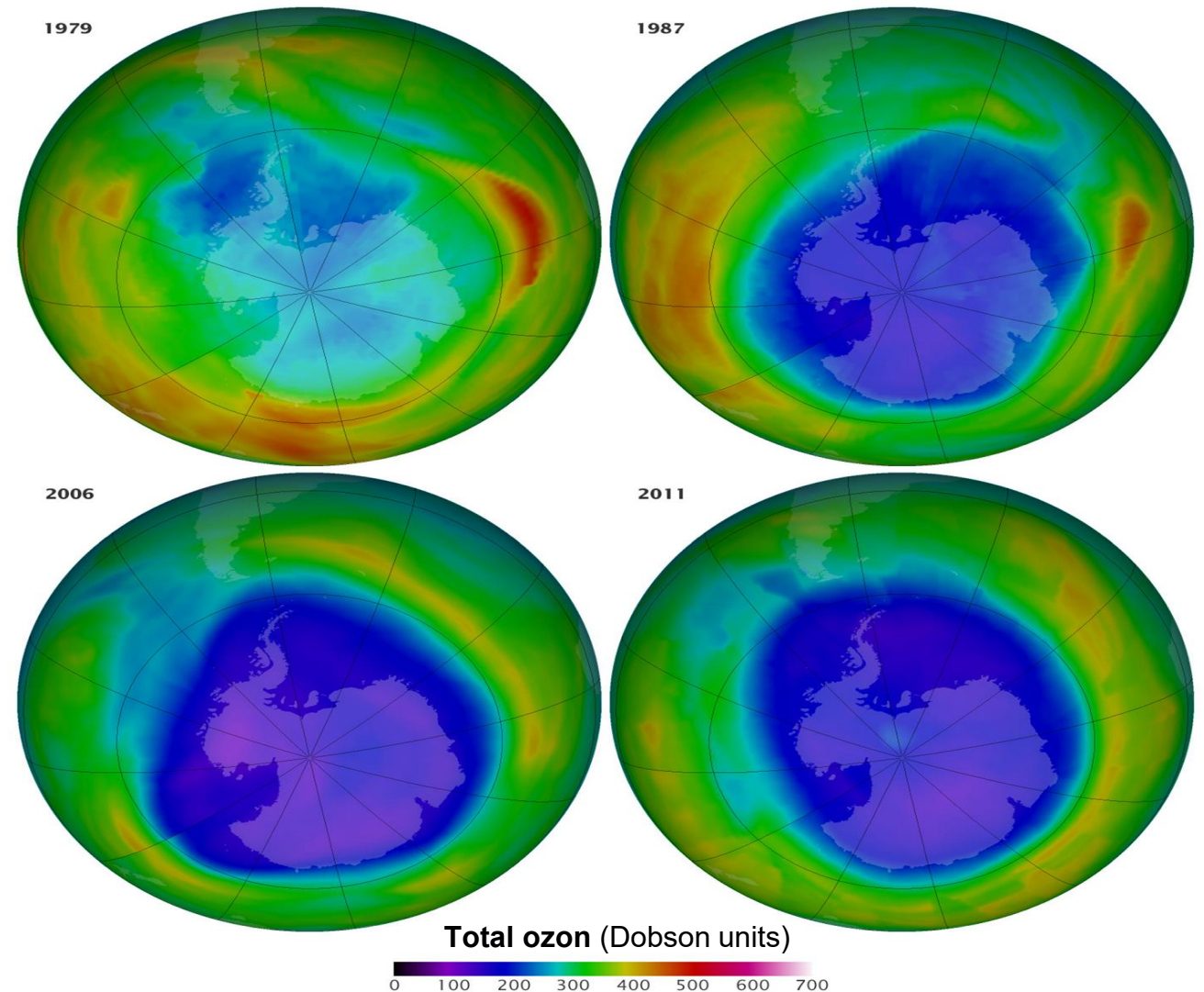
Source: <https://science.nasa.gov/earth/earth-observatory/watching-the-ozone-hole-before-and-after-the-montreal-protocol-79198/>

A Ozone loss slowed after 2000, showing policy impact.

B Ozone levels stayed constant with little change.

C Ozone kept thinning with no signs of recovery.

D Recovery started right after 1980s agreements.



Q 31

What thematic information is represented by the patterns and regional groupings on this map of Europe?

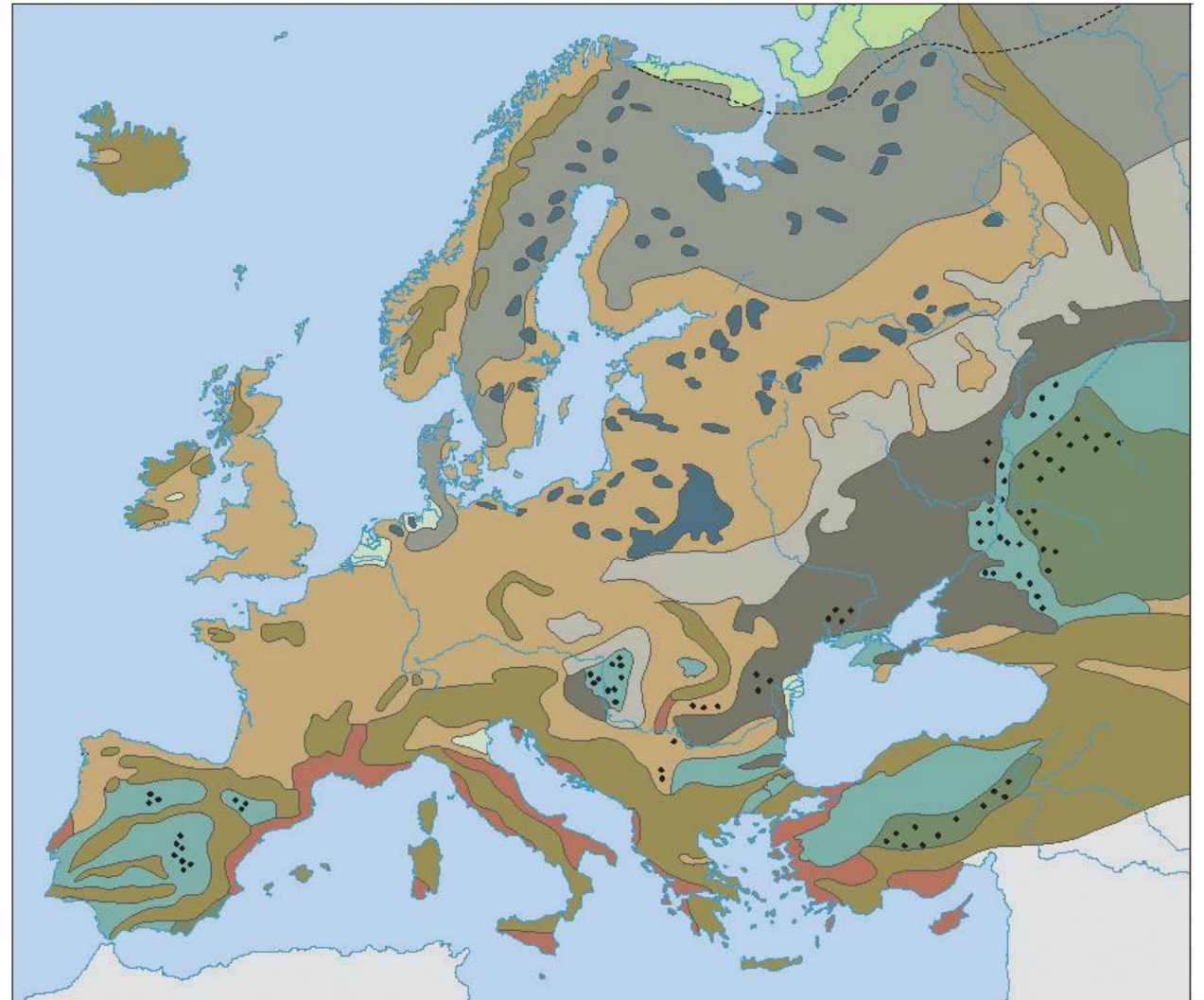
Source: https://www.zrssi.si/wp-content/uploads/2023/07/SS_drzavna-stopnja_pola-1.pdf

A Areas of different seismic risk across Europe

B Climate zones defined by temperature and precipitation

C Soil types based on composition and regional geography

D Vegetation types shaped by climate and land use



Q 32

Which of the following is NOT an outcome of gentrification affecting the urban poor?

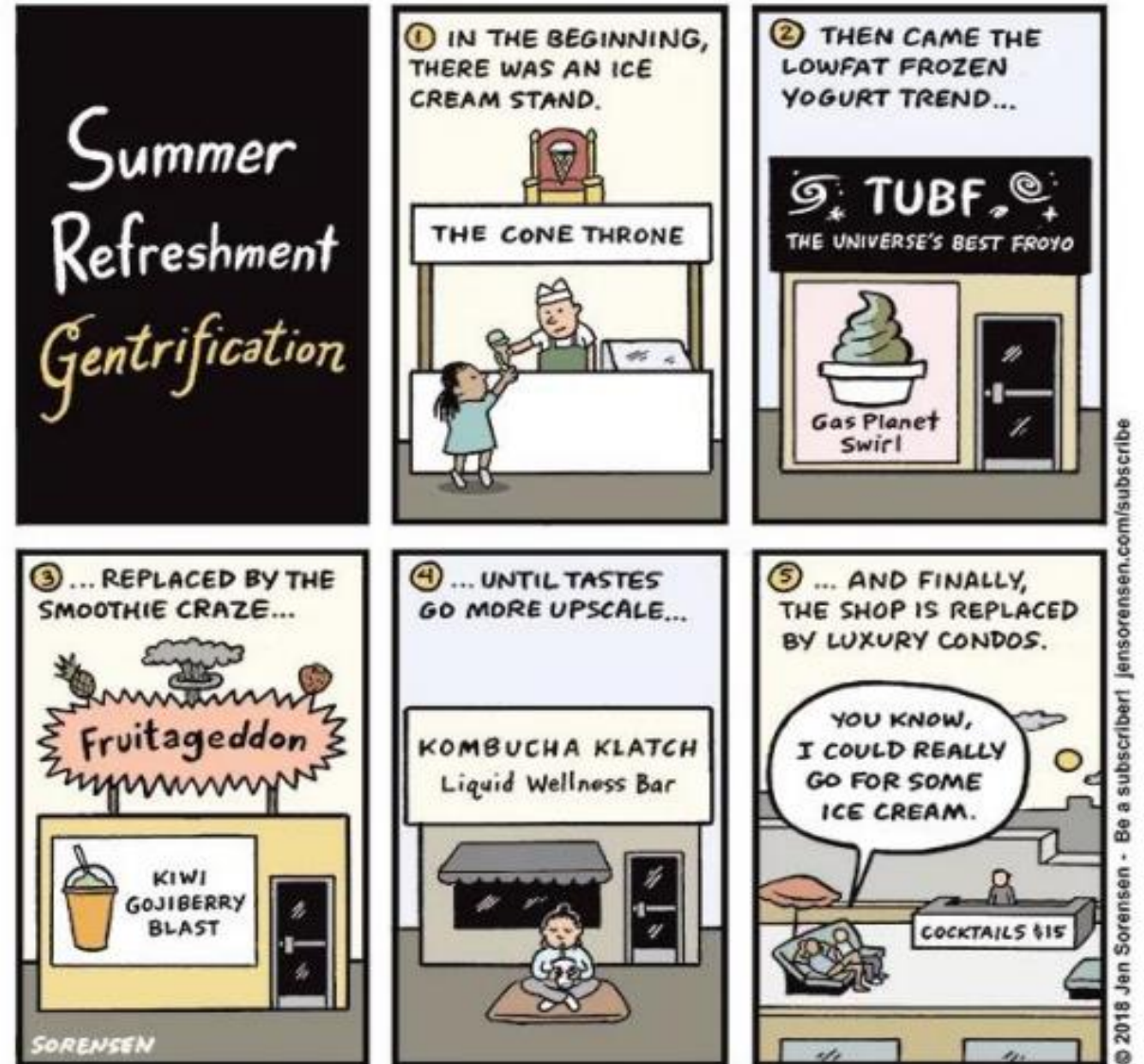
Source: <https://truthout.org/art/summer-refreshment-gentrification/>

A New middle-class residents will make daily goods and services less affordable for poorer residents.

B Higher income newcomers raise rental costs, displacing original residents.

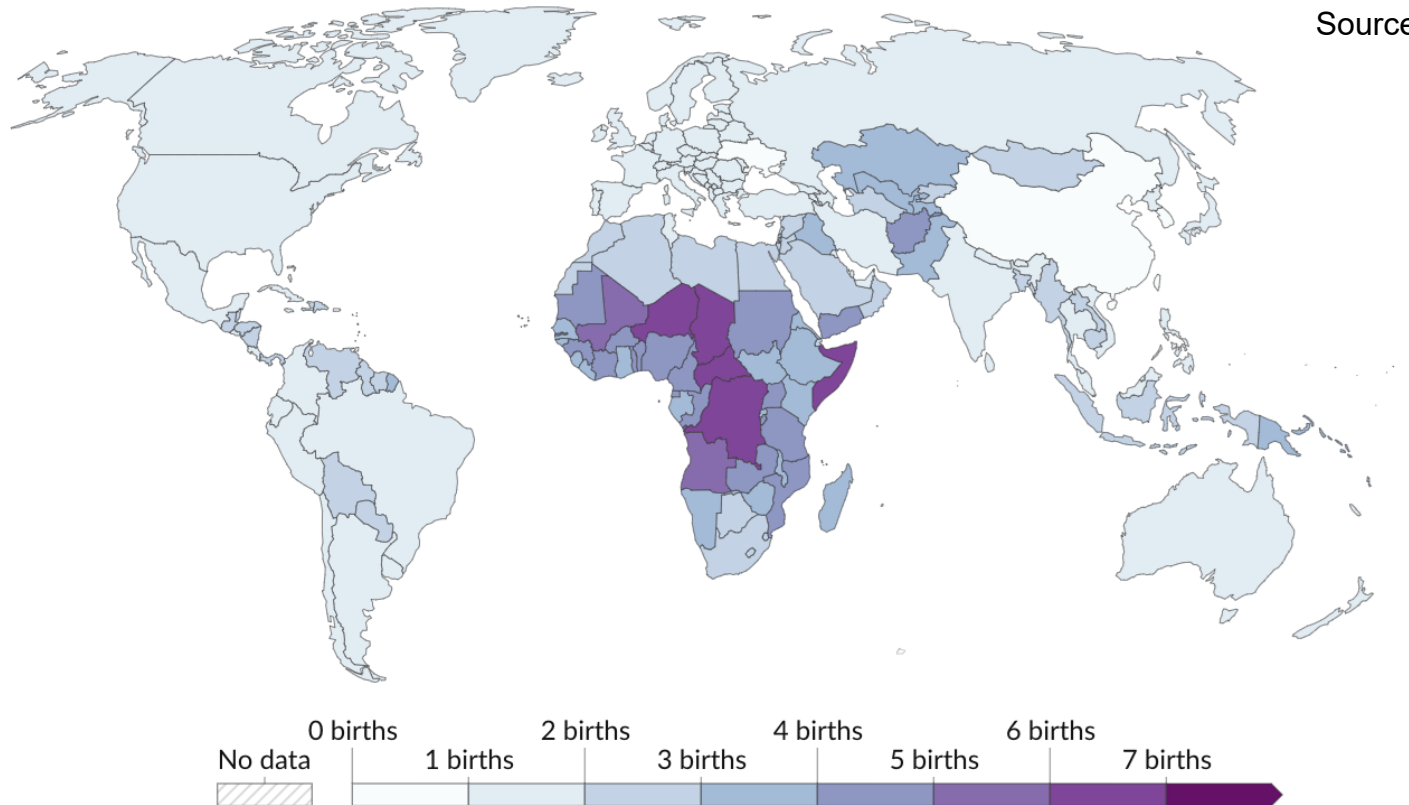
C More businesses boost the local economy and improve employment opportunities.

D Upscale food establishments increase food variety and accessibility for the urban poor.



Q 33

The map shows the fertility rate in 2023. Which of the following conclusions is supported by the map?



A Most Asian countries have fertility rates between 2 and 4 births per woman.

B Most countries in Europe have fertility rates below the replacement level.

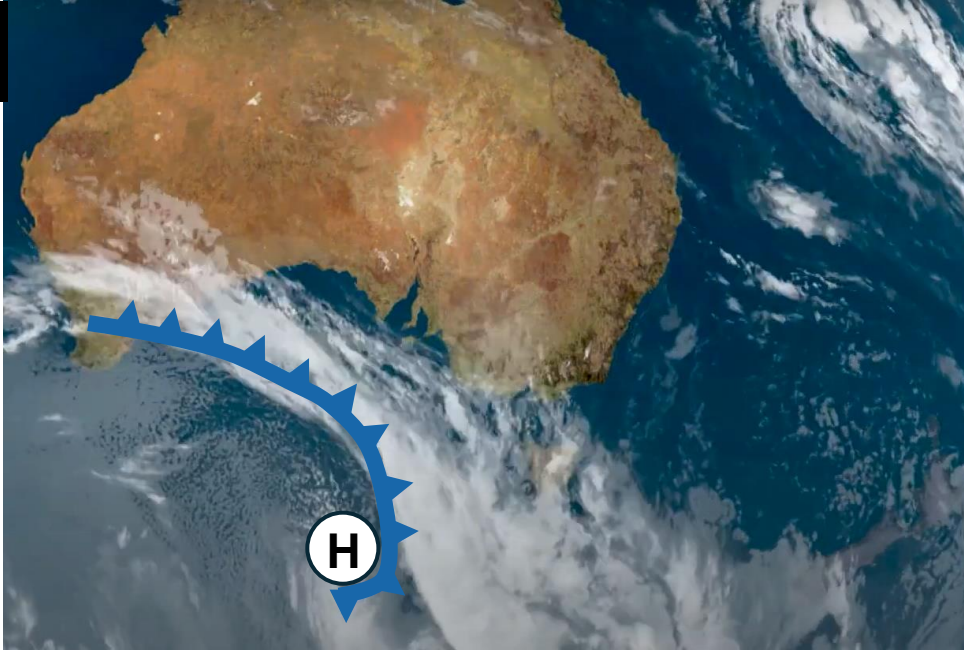
C The highest fertility rates are concentrated in Sub-Saharan Africa.

D Globally, the majority of countries have fertility rates under 4 births per woman.

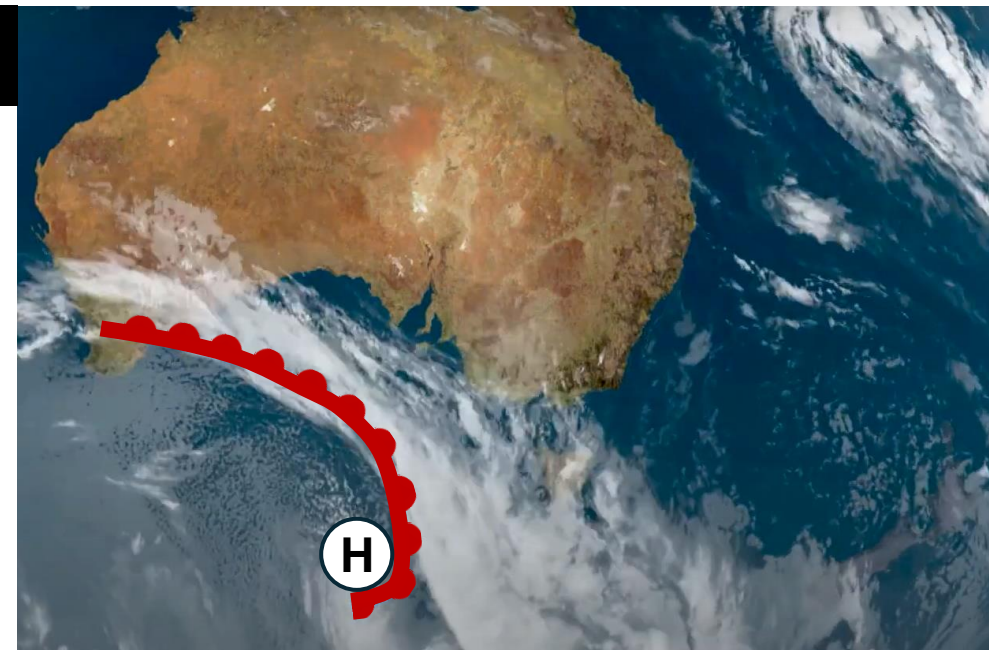
Q 34

Which satellite image is illustrated with the correct weather symbols?

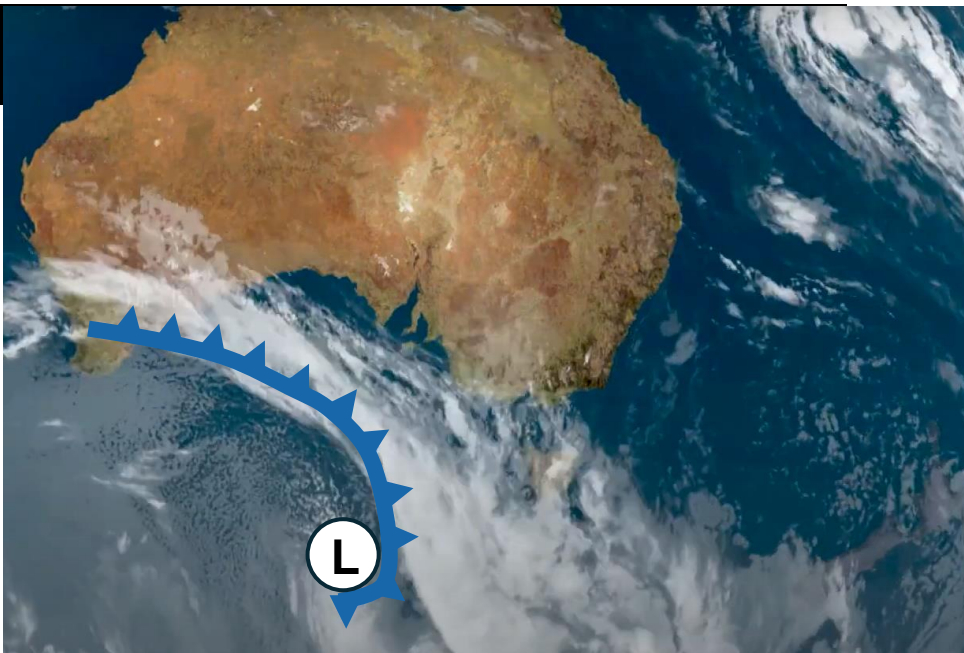
A



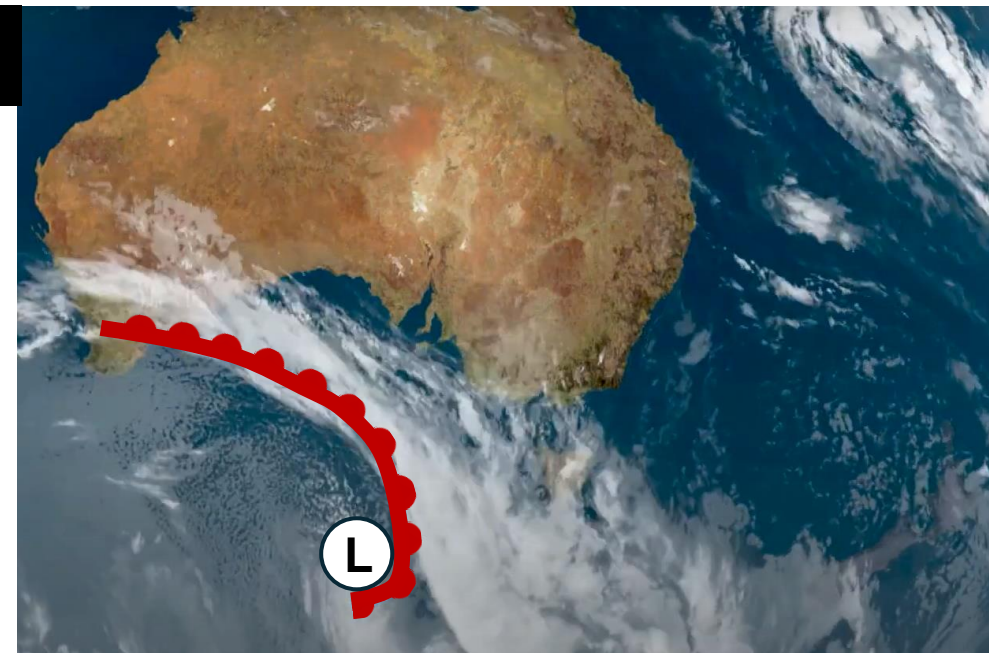
B



C



D



Source:
<https://www.severe-weather.eu/global-weather/wet-cold-australian-winter-defying-el-nino-alert-official-winter-weather-forecast-bh/>

Q 35

What type of resource is shown on the map provided?

Source:

https://www.researchgate.net/figure/Map-showing-the-AUs-of-the-CARA-is-color-coded-for-mean-estimated-undiscovered-oil-Only_fig3_26249371

A Conditional

resource

B Proven resource

C Renewable resource

**D Speculative
resource**



Q 36

Based on the Global Growth Forecasts for 2024, which general statement about regional economic projections is most accurate?

A Economies in the Asian continent are projected for uniformly high growth

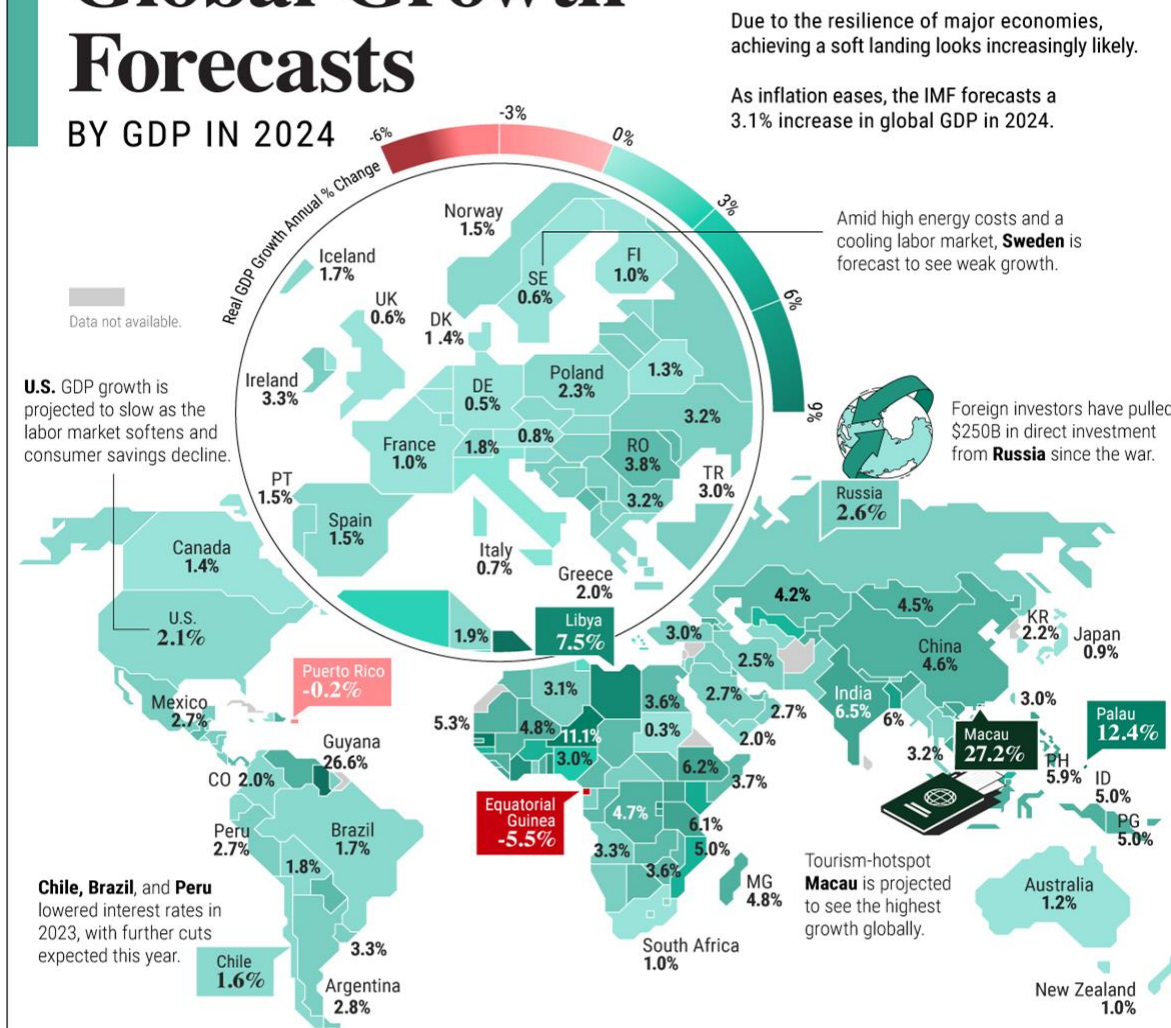
B Many established European economies are forecast to experience relatively modest growth

C North American nations are largely anticipating significant economic expansion

D South American economies are expected to universally outperform other continents.

Global Growth Forecasts

BY GDP IN 2024



Q 37

Which of the following options best explains the "decoupling" phenomenon illustrated in the graph?

Source: https://ourworldindata.org/peak-agriculture-land?utm_campaign=mb&utm_medium=newsletter&utm_source=chatgpt.com

A Technological advances improved crop yields

B Improved data tracking supported more efficient land use.

C Dietary shifts reduced land-intensive product demand

D Urbanization reduced agricultural land

Global decoupling of agricultural land and food production

Agricultural land is the sum of cropland and pasture for grazing livestock.

Production is measured in constant 2015 international-dollars, which adjusts for inflation. Includes all crops and livestock.

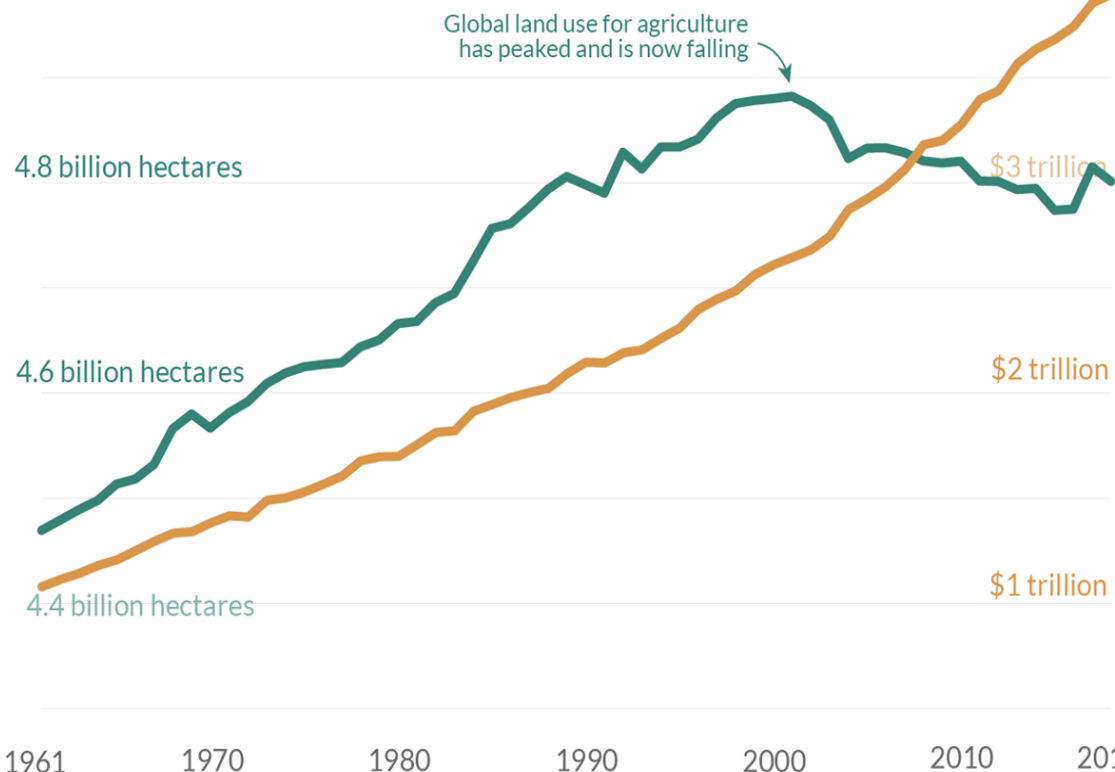
Our World
in Data

Global agricultural land use

5 billion hectares

Global agricultural production

\$4 trillion



Data source: Food and Agriculture Organization of the United Nations.

OurWorldinData.org – Research and data to make progress against the world's largest problems.

Licensed under CC-BY by the author Hannah Ritchie.

Q 38

What central tension regarding tourism does the cartoon highlight?

Source: <https://www.pagina21.eu/emanuele-del-rosso-24/libex/>

A The conflict between tourist demands for digital content versus local desires for economic growth.

B The challenges cities face in managing large tourist populations versus the need for urban development.

C The struggle between tourists' pursuit of perceived realism and local residents' experience of disruption.

D The differing expectations tourists and locals have regarding the pace and style of daily life in popular destinations.



Q 39

To engage the local community, a Geopark organized a geological dessert bake-off.

Which of these four culinary geological features relate to divergent plate movement?

Sources:

<https://www.flickr.com/photos/geolsoc/13957111120/in/set-72157644551255832>

<https://blog.geolsoc.org.uk/2018/07/06/plate-tectonic-stories-competition-the-results/hannah-moss-davies/>

<https://blog.geolsoc.org.uk/2017/06/16/the-2017-great-geobakeoff-the-results/>

https://www.reddit.com/r/geology/comments/1h6qbb7/transform_fault_cake/

https://www.reddit.com/r/geology/comments/1h6qbb7/transform_fault_cake/



A 1 and 2

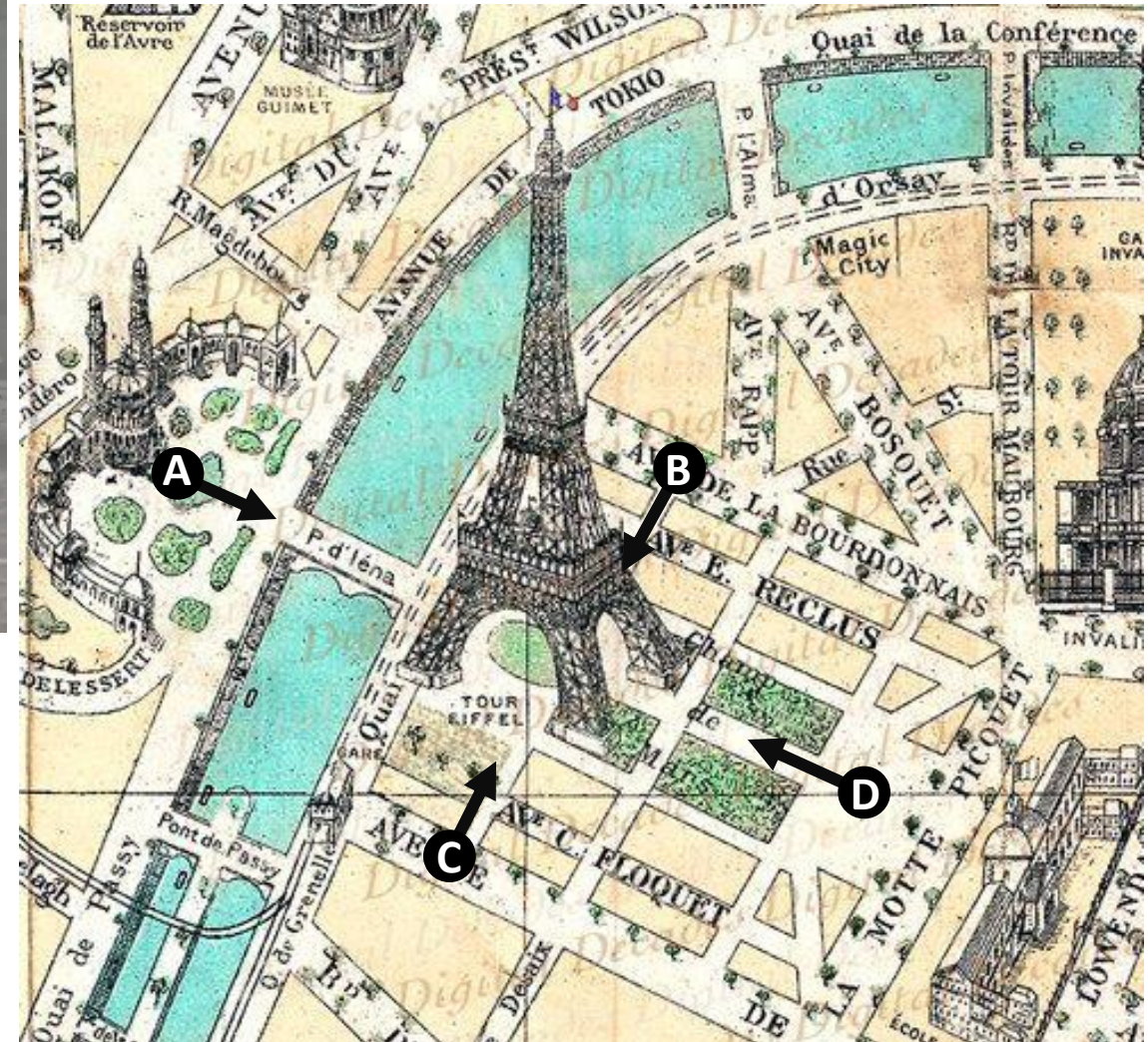
B 1 and 3

C 2 and 4

D 3 and 4

Q 40

Belgian Remco Evenepoel won the Olympic cycling road race at the 2024 Paris Olympics. **Where is the camera located?**

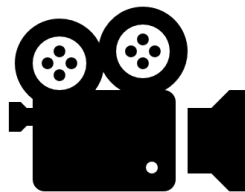


A

B

C

D



Sources: <https://www.etsy.com/no-en/listing/79747098/map-champ-de-mars-france-french-paris>
<https://www.youtube.com/watch?v=H6Om072dfbU>

The last slide

- You have reached **the last slide** of the Multimedia Test.
- Click on the arrow (↑ ←) to go back to the page(s) if you want to check your answer.
- **For fast navigation:**
 - Click [here](#) to go back to question 1
 - Click [here](#) to go back to question 10
 - Click [here](#) to go back to question 20
 - Click [here](#) to go back to question 30
- **Wait silently until the time is over.**
DO NOT CLICK ON THE ESCAPE BUT
THAT ENDS THE PRESENTATION.

The End